



ULSTER

Velvet



ULSTER Velvet

One of the finest wilton products on offer, Ulster Velvet is a luxurious wool-rich flooring option. As the name suggests, the smooth look, feel and velvety texture of this wilton carpet oozes opulence and style. This is why Ulster Velvet remains one of Ulster's most well-loved and established ranges.

Combining the luxury of wool and the hardwearing properties of nylon, Ulster Velvet is a blend of 80% wool, 20% nylon, woven tightly to create the ultimate in floor covering.

Suitable for heavy wear and available in 5m, 4m, 3m, 2m and 1m, our unique MultiWidths service allows customers to buy the amount of carpet that they need. This reduces the cost of the carpet, the cost of fitting and the amount of waste produced - therefore kinder to the environment as well as luxurious underfoot.

Ulster Velvet is available from stock with no minimum order quantity.







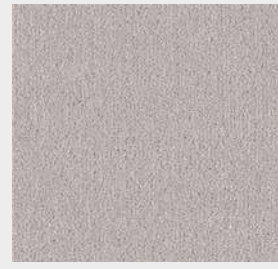
Merino
W2618



Impala
W2619



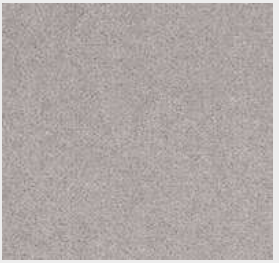
Chinchilla
W2620



Tankard
W2621



Dovecote
W2613



Cloister
W2616



Phantom
W2626



Barnstone
W2627



Stove
W2628



Aspen Green
W8625



Jade
W835



Teal
W2629



Glacier
W2624



Neptune
W2623



Windsor Blue
W8313



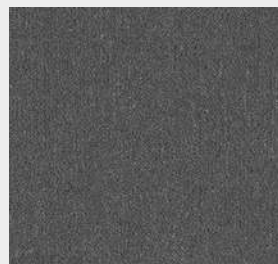
Royal Blue
W9203



Imperial Red
W8830



Burgundy
W9711



Elephant
W2622



Charcoal
W9718

Products should be selected from actual samples.



Suede
W2015



Jersey
W2605



Straw
W2023



Champagne
W837



Fauna
W2607



Pyramid
W9702



Honey Gold
W8618



Mullion
W2614



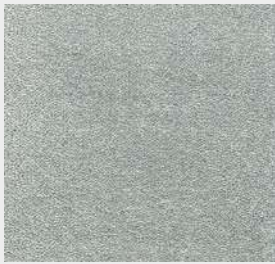
Canvas
W9209



Mushroom
W2617



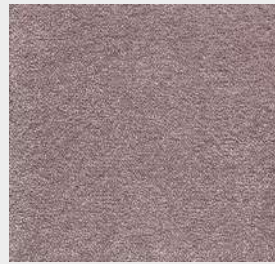
Oatmeal
W2013



Larch
W2625



Mead
W2615



Sugar Plum
W2630



Mouse
W2012

Products should be selected from actual samples.



TECHNICAL SPECS

Widths:	5, 4, 3, 2, 1 (16'5"), (13'1"), (9'10"), (6'6"), (3'3")
Quality:	9.1 Row
Pile Yarn:	80% Wool (moth resistant) / 20% Nylon
Construction:	Woven Wilton
Backing Coating:	SB Latex
Backing Materials:	Weft - Jute Warp - Jute and Cotton
Total Pile Weight:	1212g/m² (35.74 oz/yd²) +/-10%
Pile Height:	9.35mm / 0.368 inch +/-10%
Suitability:	Public Areas, Meeting Rooms, Guestrooms & Suites
CFL fire testing:	BS EN11925, EN ISO 9239, Class Cfl S1.



MAKING A DIFFERENCE

It is the company's policy to provide a sustainable business for future generations. As industry pioneers we continually review our processes to find more efficient and sustainable ways to manufacture luxury carpet.

Did you know wool fleece is re-grown in 12 months providing a sustainable supply of high quality raw material? Due to its natural properties, wool is a luxurious and extremely versatile rapidly renewable material. Naturally stain repellent and easy to maintain, a wool rich carpet looks good for longer, making it both a durable and sustainable choice.

The natural characteristics of wool and the inherent qualities of axminster & wilton weaving make the perfect combination, providing a clear alternative to man-made substitutes.

[Take a look at the other ways we are looking after our planet.](#)



ulster™

www.ulstercarpets.com

Castleisland Factory, Craigavon, Northern Ireland, BT62 1EE
028 3833 4433 | marketing@ulstercarpets.com