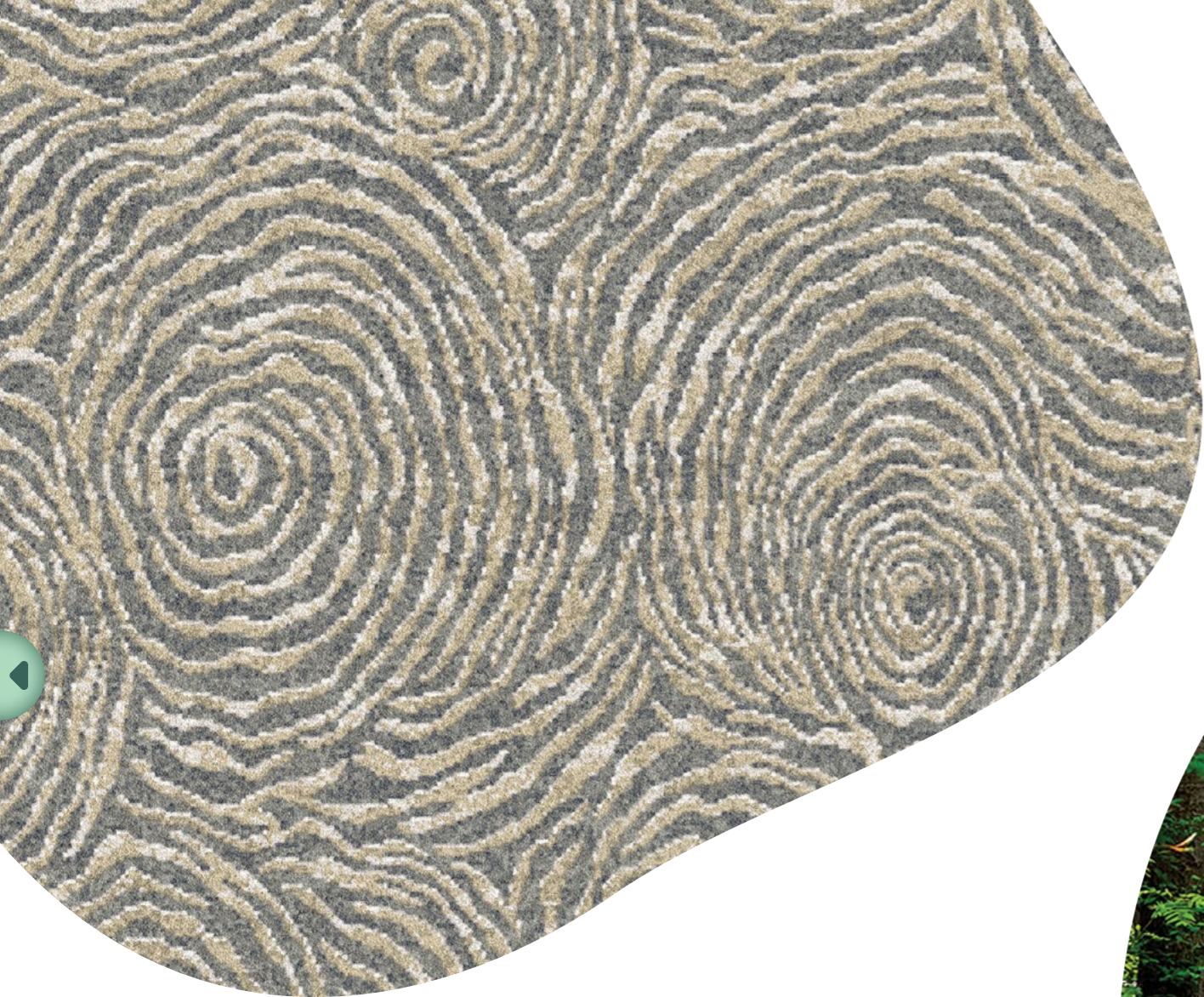


natura

ulster™

nature inspired carpet collection





natura

Grounded on a theme that accentuates how we are connected to the intricacy of nature, the Natura collection from Ulster Carpets is infused with both harmony and balance.

Designed to meet the exacting needs of the hospitality industry, Natura encompasses 7 new designs in 24 different colourways that are suitable for a range of applications, including public areas, guest rooms, restaurants and corridors, amongst others.

Our new designs magnify the beauty of nature by focusing on the intimate detail of the elements around us. The outcome is a carefully curated collection that finds the perfect balance between impactful aesthetics and subtle beauty.

designs
infused
by
nature





infused by nature

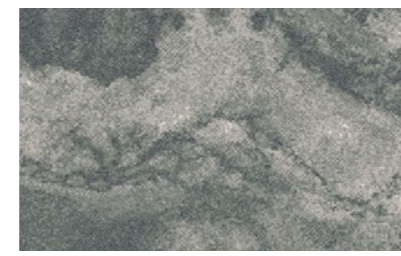
[Click below to go direct](#)

Alder



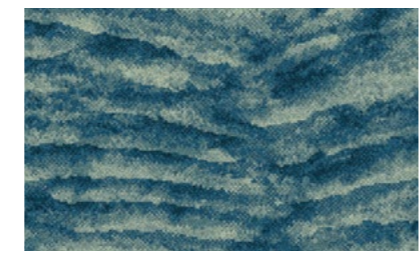
[Click below to go direct](#)

Arcus



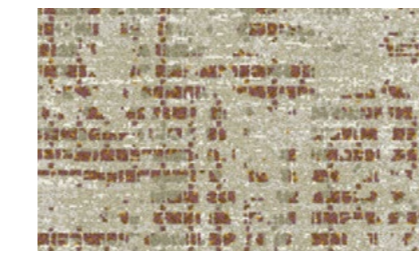
[Click below to go direct](#)

Esker



[Click below to go direct](#)

Moso



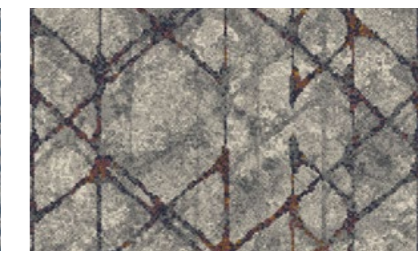
[Click below to go direct](#)

Nahla



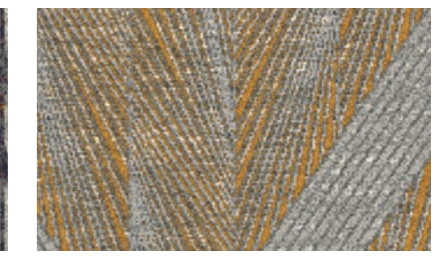
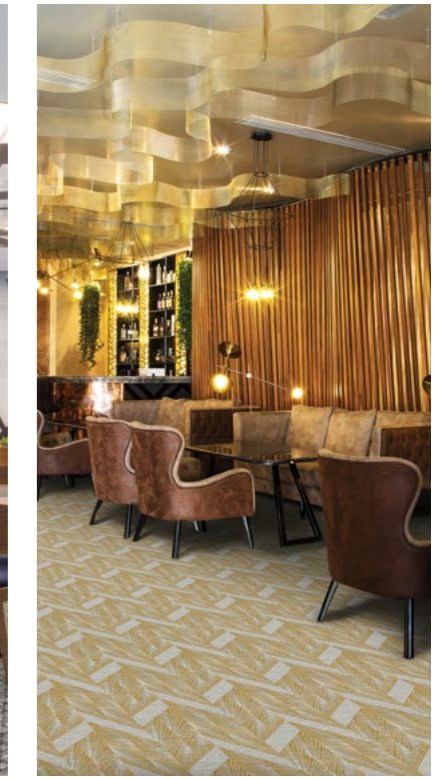
[Click below to go direct](#)

Vita



[Click below to go direct](#)

Zen



Just like the natural world, there is also a balance to how we have combined these designs with the 24 colourways available. Earth's strongest hues and hushed tones have been transformed into a contemporary colour palette and then intuitively paired with each new design to create maximum impact.

Our patented weaving process also adds unrivalled depth and texture, with each design expertly woven in 8 row axminster quality that is suitable for heavy contract applications. Manufactured from 80% wool and 20% nylon, Natura is available in 4m width with a maximum vertical repeat of 1m.

There is no minimum order required and Natura is available immediately from our comprehensive stocks.

A photograph of a forest path with the word "Alder" overlaid in white serif font. The path is covered in fallen leaves and leads through a dense forest of tall, thin trees. The foliage is lush green, and the lighting is soft and natural. There are small navigation icons in the corners: a home icon in the top right, and left and right arrow icons on the left and right sides respectively.

Alder



Alder



Ornäs

177662-1

Ribe

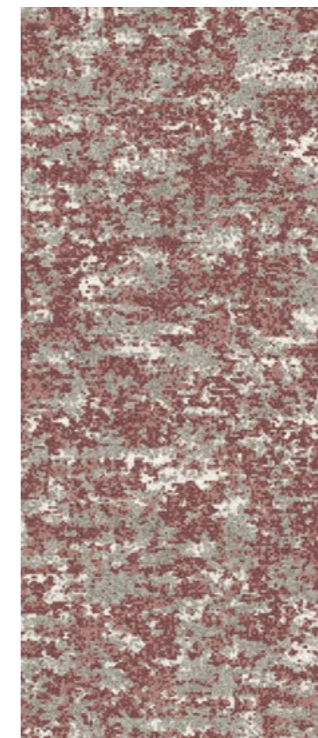
177650-6

Yam

177650-8

Kelp

177650-2



The hushed hues of Alder radiate with the soft, meandering patterns found on the bark of a Birch tree. The four contemporary colourways - Ornäs, Ribe, Yam and Kelp - are tempered by a distressed aesthetic that creates an enchantingly subtle narrative.

Arcus





Arcus

Lumen

177849-2

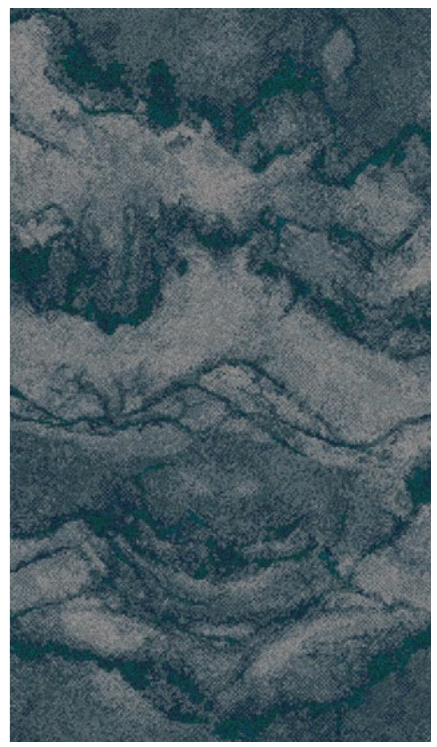
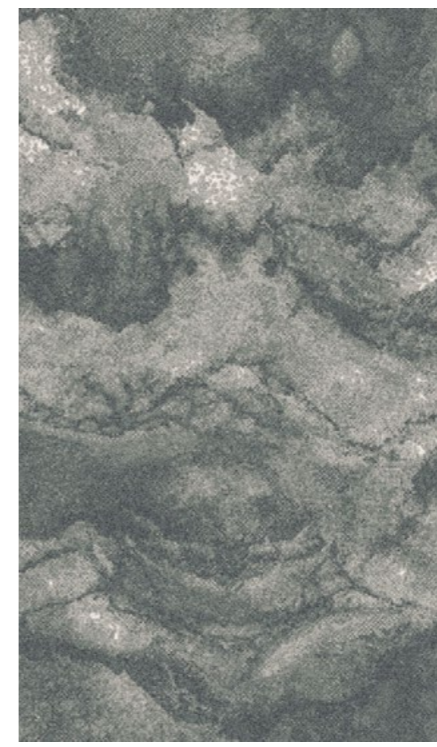
Electric

177849-1

Storm

177781-1

Imitating the turbulent nature of clouds that form at the edge of a thunderstorm, Arcus evokes the expectant nature of weather. Available in three colourways - Lumen, Electric and Storm- this is a design that delivers a clear sense of drama.



Esker





Esker



Thar

177053-18

Sif

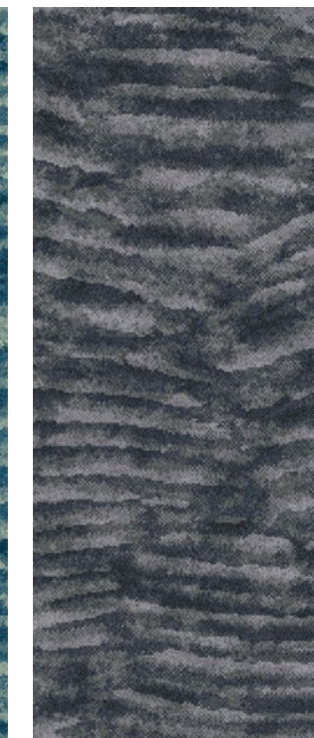
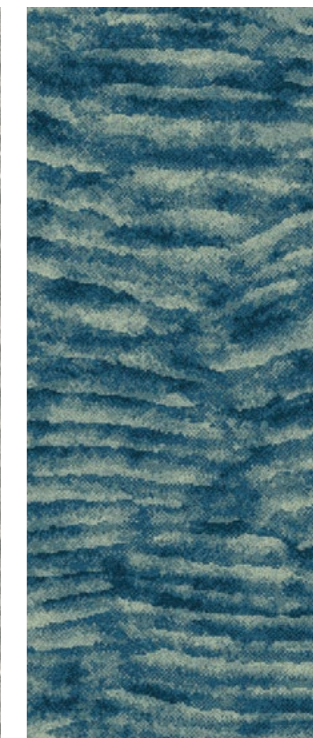
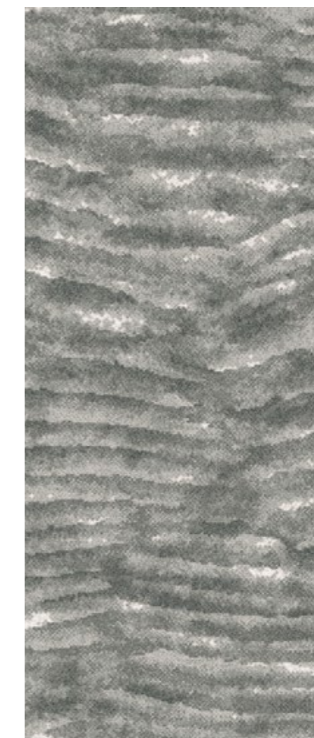
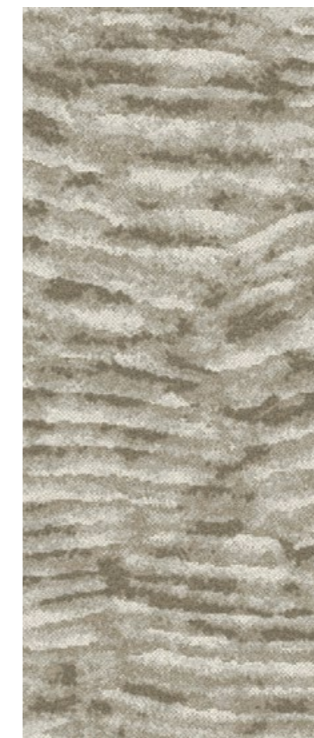
177053-1

Azul

177053-14

Rift

177053-17



Available in four colourways - Thar, Sif, Azul and Rift - Esker takes its name from the long ridges deposited by meltwater from a retreating glacier. These flowing striations form an intimate pattern of serenity.



Moso

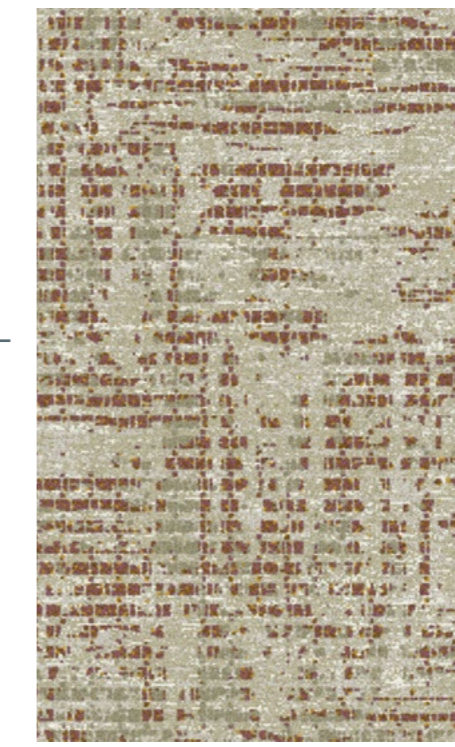




Moso

Tansu

177852-1



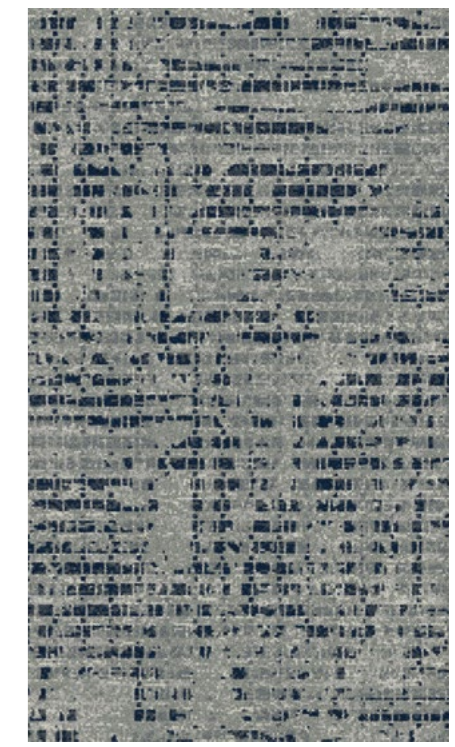
Lint

177851-1



Char

177850-1



Influenced by the patterns of Moso, a type of bamboo native to China and Taiwan, this impactful design is available in three colourways – Tansu, Lint and Char. The layered, patina effect accentuates the organic aesthetics of nature.



Mahla



Nahla

Zale

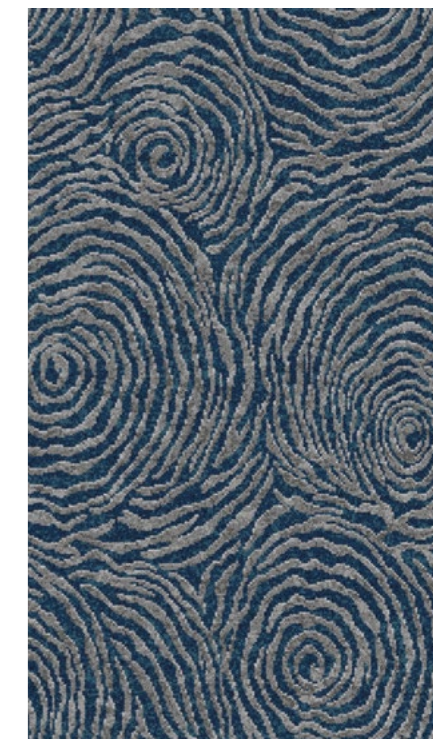
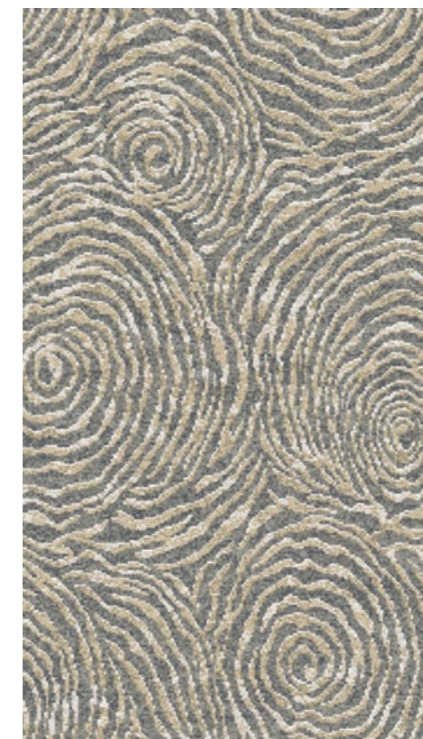
177714-1

Unda

177864-1

Bayou

177714-2



Reminiscent of the ripples left by rain droplets, Nahla means 'first drink of water'. The Arabic and African origin of the word resonates within the three colourways - Zale, Unda and Bayou - to create a mesmerising creative statement.



Vita





Vita

Origin

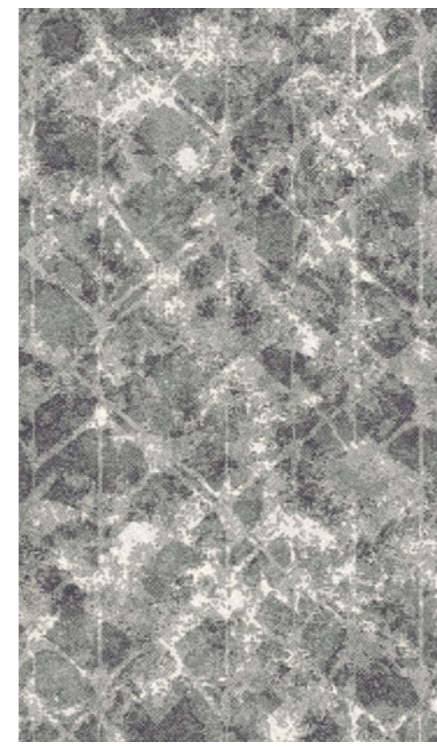
176669-2

Alpha

176669-7

Helix

177608-3



Reflecting the complexity of molecular structures, Vita is Latin 'for the course of one's life'. With three colourways - Origin, Alpha and Helix - the layered linear elements create three-dimensional depth for an emboldened design.

Zen





Zen

Inga

177584-1

Mesa

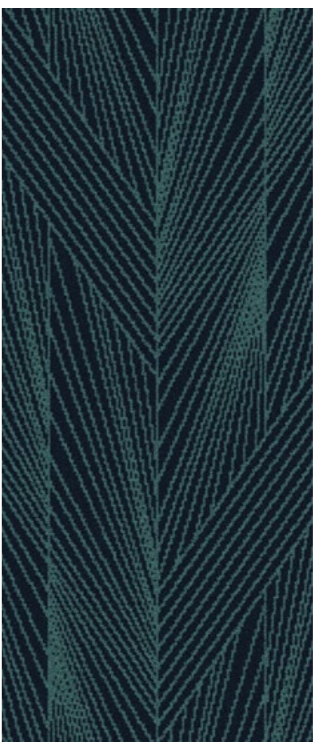
177848-1

Moka

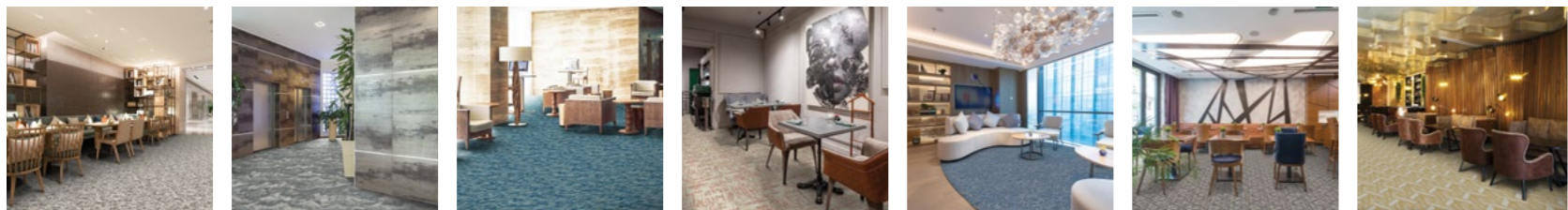
177656-2

Yari

177656-3



The striking Zen designs encompass the new heights that can be reached when you are in a state of calm attentiveness. The four modern colourways, Inga, Mesa, Moka and Yari, elevate the transition of the textures to create a sense of energy.



Alder **Arcus** **Esker** **Moso** **Nahla** **Vita** **Zen**

ENGLISH

Suitability

Heavy Contract,
Heavy Domestic

Pile Yarn

80% Wool (Moth resistant)
20% Nylon

Backing Yarn

Polypropylene

Width available

4.00m (13' 1")

Pile Height

7.14mm (0.281")

Pitch

27.56 per dm (7 per inch)

Rows

31.50 per dm (8 per inch)

Total Pile Weight

1207g/m² (35.60 oz/yd²) +/-10%

Please note:

Carpet should be professionally laid according to BS 5325 ISO13746:2000 using good quality underlay

FRENCH

Qualité

Usage commercial intensif
Usage domestique intensif

Composition du Fil

80% Laine (Résistant aux mites)
20% Nylon

Support dossier

Polypropylène

Largeur disponible

4,00m

Hauteur de velours

7,14mm au dessus du dossier

Serrage chaîne

27,56 par 10cm

Serrage trame

31,50 par 10cm, serrage 8"

Poids total de velours

1207g/m² +/-10%

A noter:

Toute moquette doit être posée selon la norme BS 5325 ISO 13746:2000 en utilisant une thibaude de bonne qualité

GERMAN

Qualität

Starke Nutzung im Objektbereich
Starke Nutzung im Privatbereich

Polzusammensetzung

80% Schurwolle (Mottenresistent)
20% Nylon

Rückenmaterial

Polypropylene

Lieferbreite

4,00m

Polhöhe

7,14mm

Kettdichte

27,56 pro 10cm

Schussdichte

31,50 pro 10cm, 8 Schuss

Poleinsatzgewicht

1207g/m² +/-10%

Bemerkung:

Teppichboden sollte gemäß BS 5325 ISO 13746:2000 mit einer qualitativ hochwertigen Teppich-Unterlage verlegt werden

DESIGN INFO

| Design Name Référence du dessin Designname | Design Number Référence du dessin Designnummer | Colourway Coloris Farbnummer | Repeat Width x Length Raccord Largeur x Longueue Rapport Breite x Länge |
|--|--|------------------------------------|---|
| Alder Pages 6-9 | 177650-2 177650-6 177650-8 177662-1 | Kelp Ribe Yam Ornäs | 200cm x 100.3cm Straight Match / Raccord Droit / Seite an Seite (78.9" x 39.5" Straight Match / Raccord Droit / Seite an Seite) |
| Arcus Pages 10-13 | 177781-1 177849-1 177849-2 | Storm Electric Lumen | 200cm x 100.3cm Straight Match / Raccord Droit / Seite an Seite (78.9" x 39.5" Straight Match / Raccord Droit / Seite an Seite) |
| Esker Pages 14-17 | 177053-14 177053-17 177053-18 177053-1 | Azul Rift Thar Sif | 200cm x 100.3cm Straight Match / Raccord Droit / Seite an Seite (78.9" x 39.5" Straight Match / Raccord Droit / Seite an Seite) |
| Moso Pages 18-21 | 177850-1 177851-1 177852-1 | Char Lint Tansu | 200cm x 100cm Straight Match / Raccord Droit / Seite an Seite (78.9" x 39.3" Straight Match / Raccord Droit / Seite an Seite) |
| Nahla Pages 22-25 | 177714-1 177714-2 177864-1 | Zale Bayou Unda | 200cm x 100.3cm Straight Match / Raccord Droit / Seite an Seite (78.9" x 39.5" Straight Match / Raccord Droit / Seite an Seite) |
| Vita Pages 26-29 | 177608-3 176669-2 176669-7 | Helix Origin Alpha | 200cm x 100.3cm Straight Match / Raccord Droit / Seite an Seite (78.9" x 39.5" Straight Match / Raccord Droit / Seite an Seite) |
| Zen Pages 30-33 | 177584-1 177848-1 | Inga Mesa | 134cm x 99cm Straight Match / Raccord Droit / Seite an Seite (52.6" x 38.9" Straight Match / Raccord Droit / Seite an Seite) |
| | 177656-3 177656-2 | Yari Moka | 67cm x 99cm Straight Match / Raccord Droit / Seite an Seite (26.3" x 38.9" Straight Match / Raccord Droit / Seite an Seite) |

Whilst every effort is made to achieve accurate colour reproduction of products in this brochure, printing limitations can be misleading. Selection of products should be made from actual samples.

Bien que tous les efforts soient faits pour obtenir une reproduction fidèle des couleurs des moquettes dans cette brochure, les limitations d'impression peuvent être trompeuses. La sélection des produits doit être effectuée à partir d'échantillons réels.

Wir weisen darauf hin, daß wir akurate Farbgleichheit wie in unserer Broschüre gezeigt anstreben, jedoch kann diese vom Bild auf Grund von Druckeinschränkungen abweichen und daher ist es unbedingt wichtig, die Produkte anhand von tatsächlichen Musterstücken auszuwählen.



natura

UK

uclondon@ulstercarpets.com

Ireland:

ucireland@ulstercarpets.com

Europe:

uceurope@ulstercarpets.com

Middle East:

ucdubai@ulstercarpets.com

North America:

ucamerica@ulstercarpets.com

Ulster Carpets Ltd

Castleisland Factory, Craigavon

N.Ireland, BT62 1EE

T +44 (0) 28 3833 4433

F: +44 (0) 28 3833 3142

ulster™

