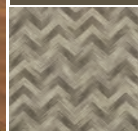
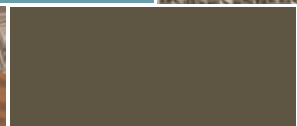


ulster™
www.ulstercarpets.com

FUSION

Available in 4m widths
80% wool / 20% nylon
Heavy Contract /
Extra Heavy Domestic Wear



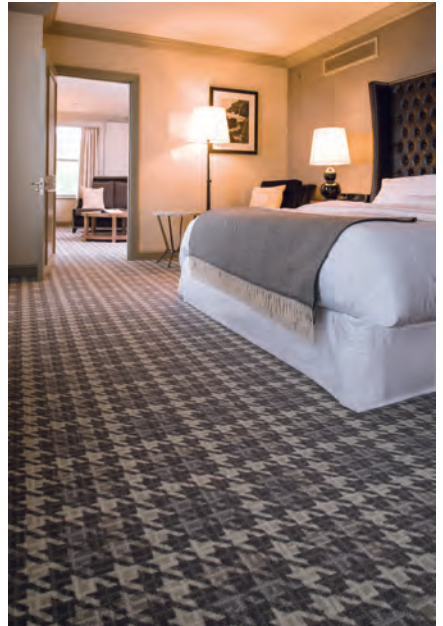
Tone

Available in 4m Widths

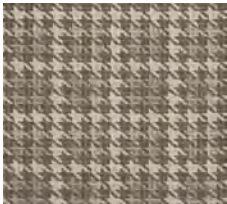
80% Wool / 20% Nylon

Suitable for Heavy Contract /

Extra Domestic Wear



Tone Marquee (11/20086)



11/20086 Tone Marquee



31/20086 Tone Electric



32/20086 Tone Denim

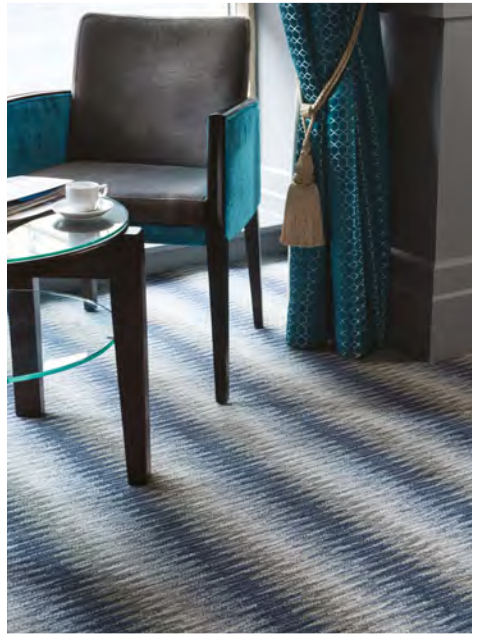
Sonic

Available in 4m Widths

80% Wool / 20% Nylon

Suitable for Heavy Contract /

Extra Domestic Wear



Sonic Denim (32/20087)



11/20087 Sonic Marquee



31/20087 Sonic Electric



32/20087 Sonic Denim

Reverb

Available in 4m Widths

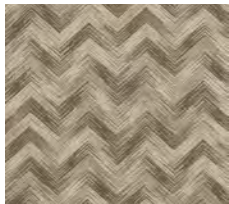
80% Wool / 20% Nylon

Suitable for Heavy Contract /

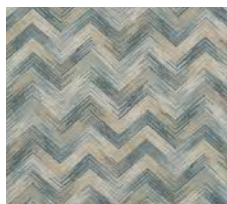
Extra Domestic Wear



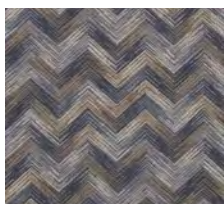
Reverb Denim (32/20088)



11/20088 Reverb Marquee



31/20088 Reverb Electric



32/20088 Reverb Denim

FUSION



Available in 4m Widths

80% Wool (moth resistant) / 20% Nylon

Heavy Contract / Extra Heavy Domestic Wear

Repeat Length:

Tone 44cm (17") Self Match

Sonic 76cm (30") Self Match

Reverb 102cm (40") Self Match

Total Pile Weight: 1207g/m² (36.50oz/yd²)

Total Pile Height: 7.14mm (0.28")

Pitch: 27.56 per dm (7 per inch)

Rows: 31.50 per dm (8 per inch)

ulster[™]
www.ulstercarpets.com