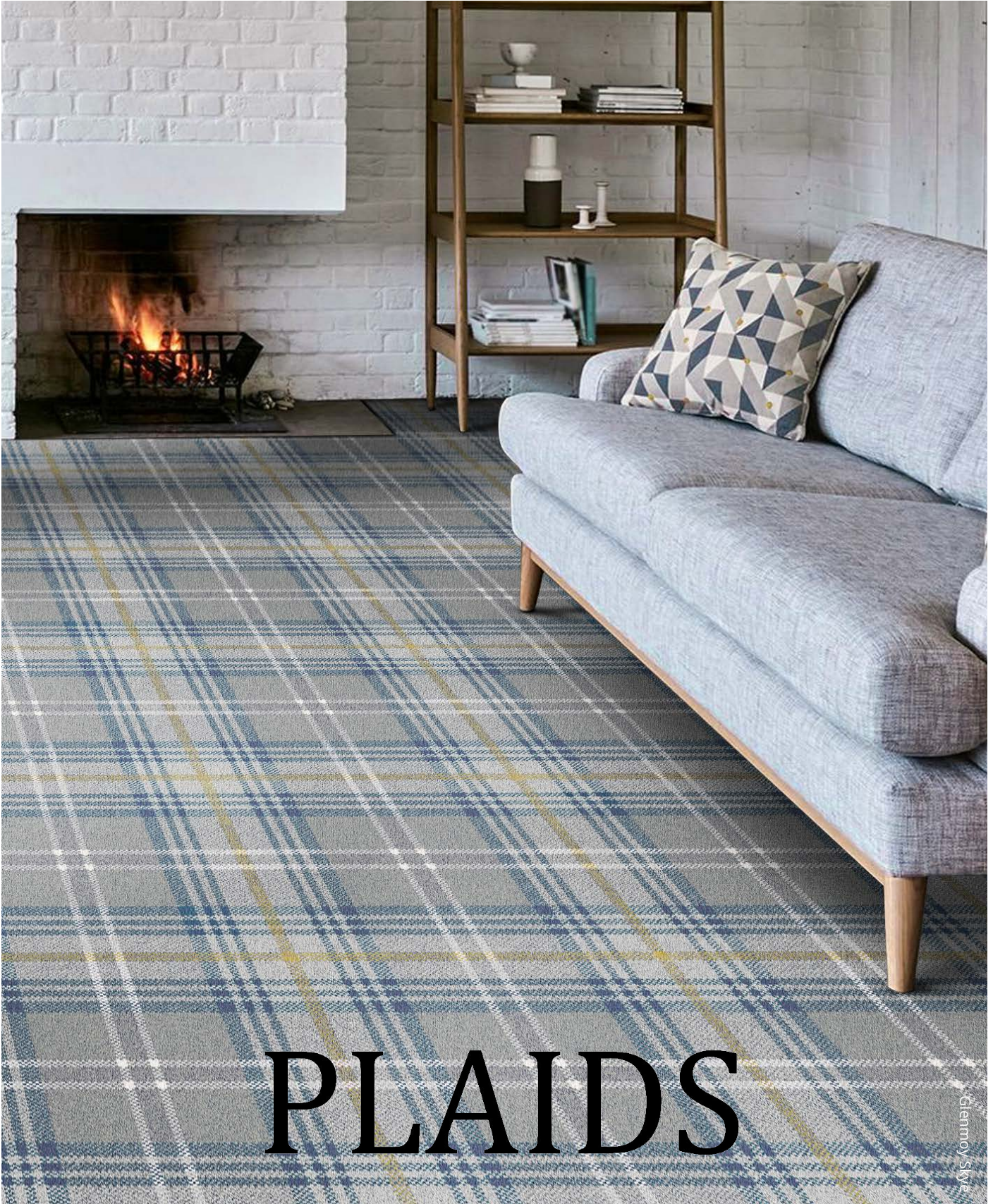




BY APPOINTMENT TO
HER MAJESTY THE QUEEN
CARPET MANUFACTURER
ULSTER CARPET (HOLDINGS) LTD
COUNTY ARMAGH

ulster™



PLAIDS

Glennoy Style



Contents

Plaids

Glenmoy

[3-6](#)

Braeburn

[7-10](#)

Beaumont

[11-14](#)

Boho

[15-16](#)

With a wealth of variations in colour and style, it is little wonder that the Plaid has remained in vogue in the worlds of both fashion and interiors for centuries.

Plaids have the unique ability to add warmth and character to any setting and, building on this strength, our impressive Plaids Collection provides a range of options for various hospitality settings.

Design: Glenmoy Beige Chisholm

GLENMOY

Axminster

Widths: 4.57m, 3.66m, 2.74m, 1.83m & 0.91m (15', 12', 9', 6' & 3')

Largeurs: 4.57m, 3.66m, 2.74m, 1.83m & 0.91m.

Breiten: 4.57m, 3.66m, 2.74m, 1.83m & 0.91m

Pile Yarn: 80% Wool (moth resistant) / 20% Nylon

Composition du fil: 80% Laine (résistant aux mites) / 20% Nylon

Polzusammensetzung: 80% Schurwolle (mottenresistent) /

20% Nylon

Suitability: Heavy Contract including Various Public Areas, Corridors, Meeting Rooms, Bedrooms and Suites.

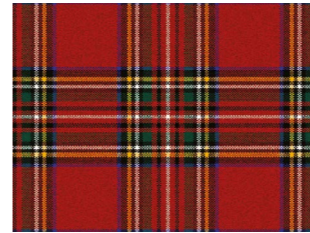
Qualité: Usage commercial intensif y compris Zones publiques, Couloirs, Salles de réunion, et Chambres et suites.

Qualität: Starke Nutzung im Objektbereich einschließlich alle öffentlicher Bereiche, Korridore, Tagungsräume sowie Schlafzimmer und Suiten.

Design: Glenmoy Stornoway



10/2754 Royal Stewart



12/2756 Blackwatch



91/20082 Robertson



91/20083 Douglas



2/2755 Beige Chisholm



92/2755 Iona



94/2755 Lerwick



91/2755 Skye



93/2755 Stornoway



Design: Braeburn Estuary



Braeburn

Axminster

Widths: 4.57m, 3.66m, 2.74m, 1.83m & 0.91m (15', 12', 9', 6' & 3')

Largeurs: 4.57m, 3.66m, 2.74m, 1.83m & 0.91m.

Breiten: 4.57m, 3.66m, 2.74m, 1.83m & 0.91m

Pile Yarn: 80% Wool (moth resistant) / 20% Nylon

Composition du fil: 80% Laine (résistant aux mites) / 20% Nylon

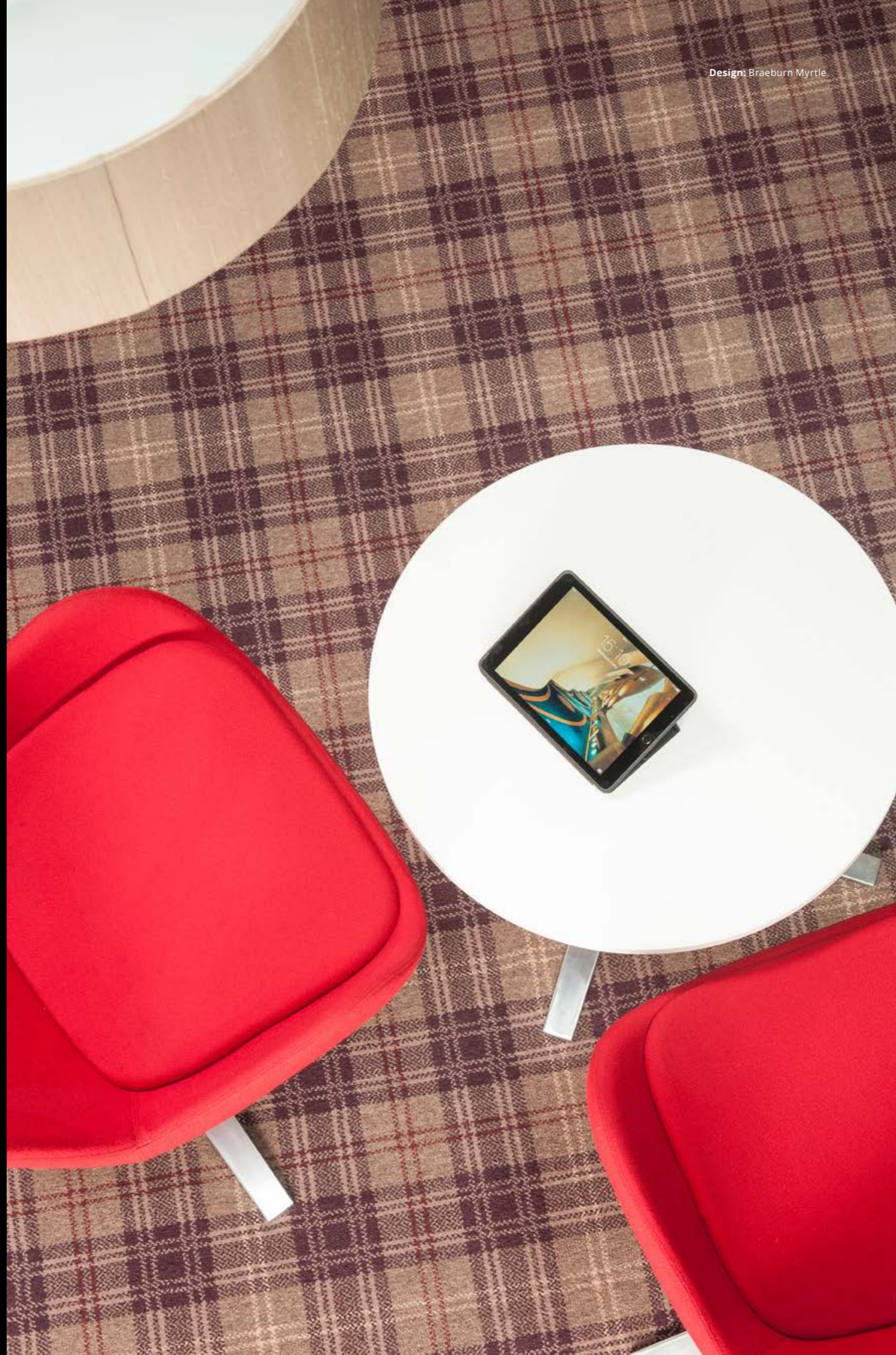
Polzusammensetzung: 80% Schurwolle (mottenresistent) / 20% Nylon

Suitability: Heavy Contract including Various Public Areas, Corridors, Meeting Rooms, and Bedrooms and Suites.

Qualité: Usage commercial intensif y compris Zones publiques, Couloirs, Salles de réunion, et Chambres et suites.

Qualität: Starke Nutzung im Objektbereich einschließlich alle öffentlicher Bereiche, Korridore, Tagungsräume sowie Schlafzimmer und Suiten.

Design: Braeburn Myrtle



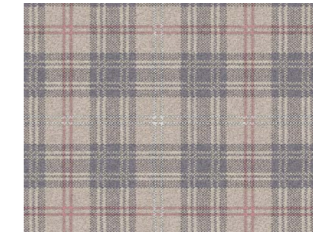
93/20084 Biscay



92/20084 Sea Holly



91/20084 Estuary



94/20084 Forge



71/20084 Petrel



72/20084 Myrtle



01/20084 Tayberry



Design: Braeburn Biscay





Design: Beaumont Inkstone

BEAUMONT

Axminster

Widths: 4.57m, 3.66m, 2.74m, 1.83m & 0.91m (15', 12', 9', 6' & 3')

Largeurs: 4.57m, 3.66m, 2.74m, 1.83m & 0.91m.

Breiten: 4.57m, 3.66m, 2.74m, 1.83m & 0.91m

Pile Yarn: 80% Wool (moth resistant) / 20% Nylon

Composition du fil: 80% Laine (résistant aux mites) / 20% Nylon

Polzusammensetzung: 80% Schurwolle (mottenresistent) /

20% Nylon

Suitability: Heavy Contract including all Public Areas, Meeting Rooms, and Bedrooms and Suites.

Qualité: Usage commercial intensif y compris Zones publiques, Salles de réunion, et Chambres et suites.

Qualität: Starke Nutzung im Objektbereich einschließlich verschiedener öffentlicher Bereiche, Tagungsräume sowie Schlafzimmer und Suiten.



Design: Beaumont Cairn

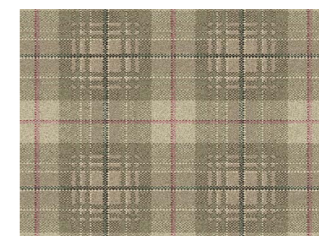
93/20016 Granary



11/20016 Chalk Downs



91/20016 Turtle Dove



94/20016 Cairn



71/20016 Quail



52/20016 Hickory



92/20016 Inkstone



14/20016 Osprey



12/20016 Brindle



15/20016 Grouse



48/20016 Croft Gold



47/20016 Antique Green



Design: Beaumont Brindle



Design: Boho Bloomsbury Summer Breeze



BOHO

Axminster

Widths: 4m, 3m, 2m & 1m (13'1", 9'10", 6'6" & 3'3")

Largeurs: 4m, 3m, 2m & 1m

Breiten: 4m, 3m, 2m & 1m

Pile Yarn: 80% Wool (moth resistant) / 20% Nylon

Composition du fil: 80% Laine (résistant aux mites) / 20% Nylon

Polzusammensetzung: 80% Schurwolle (mottenresistent) / 20% Nylon

Suitability: Moderate Contract including Bedrooms and Suites.

Qualité: Usage commercial modéré comprenant des chambres et des suites.

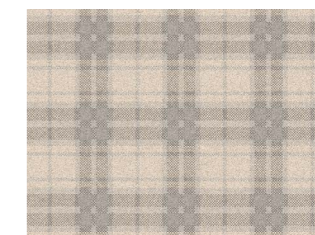
Qualität: Leichte Anwendung im Objektbereich einschließlich Schlafzimmer und Suiten.

Hamilton

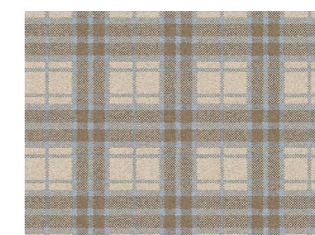
11/30006 Honesty



91/30006 Moon Shimmer



31/30006 Summer Breeze



01/30006 Tea Rose



Design: Glenmoy Lerwick



ulster™

Ulster Carpets
Castleisland Factory, Portadown,
Co. Armagh, BT62 1EE
Tel: 028 3833 4433

Email: marketing@ulstercarpets.com
www.ulstercarpets.com