

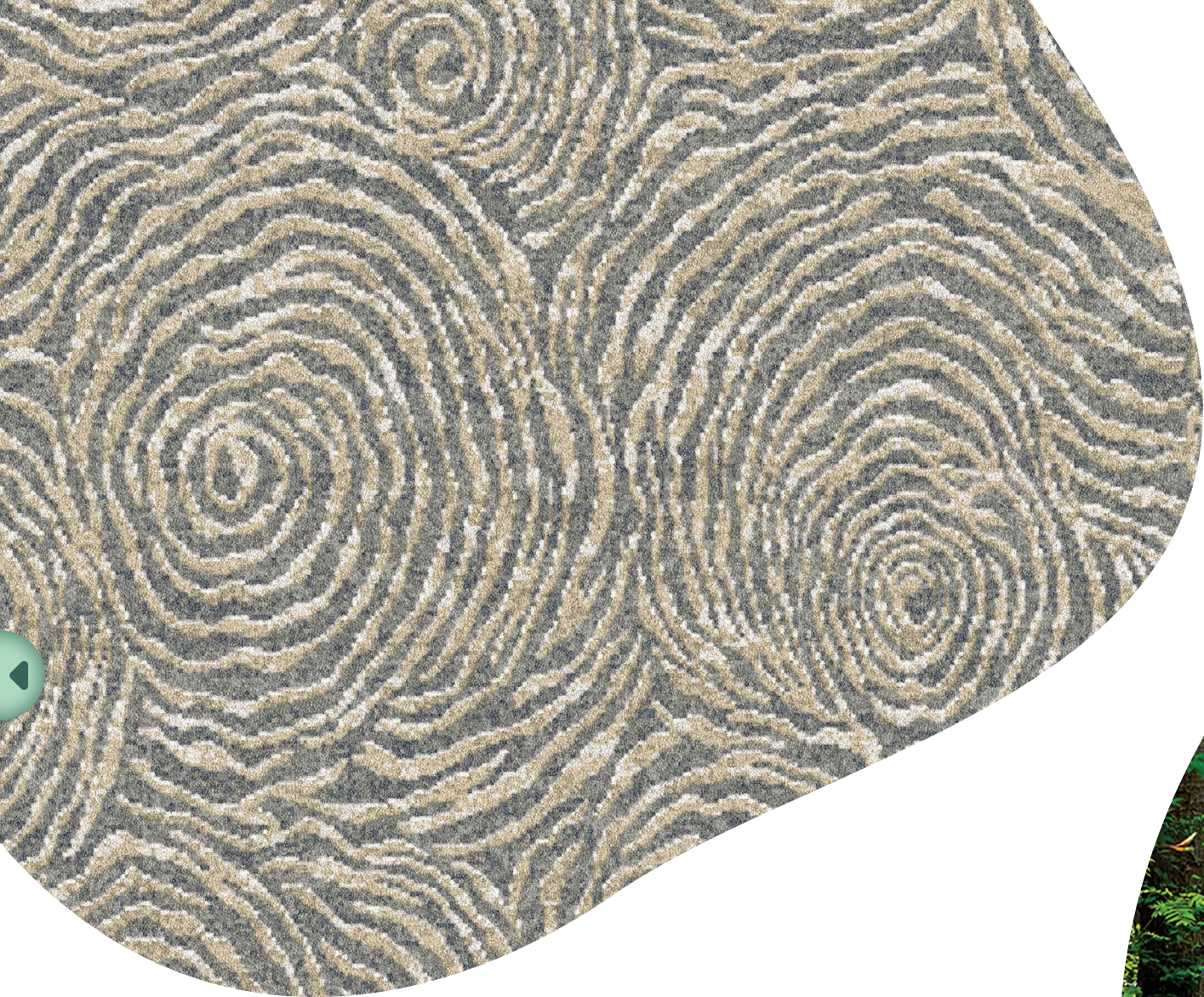
# natura

ulster™

nature inspired carpet collection







**natura**

Grounded on a theme that accentuates how we are connected to the intricacy of nature, the Natura collection from Ulster Carpets is infused with both harmony and balance.

Designed to meet the exacting needs of the hospitality industry, Natura encompasses 7 new designs in 24 different colourways that are suitable for a range of applications, including public areas, guest rooms, restaurants and corridors, amongst others.

Our new designs magnify the beauty of nature by focusing on the intimate detail of the elements around us. The outcome is a carefully curated collection that finds the perfect balance between impactful aesthetics and subtle beauty.

designs  
infused  
by  
nature





# infused by nature

Just like the natural world, there is also a balance to how we have combined these designs with the 24 colourways available. Earth's strongest hues and hushed tones have been transformed into a contemporary colour palette and then intuitively paired with each new design to create maximum impact.

Our patented weaving process also adds unrivalled depth and texture, with each design expertly woven in 8 row axminster quality that is suitable for heavy contract applications. Manufactured from 80% wool and 20% nylon, Natura is available in 4m width with a maximum vertical repeat of 1m.

There is no minimum order required and Natura is available immediately from our comprehensive stocks.

Click below to go direct to the range

## Alder



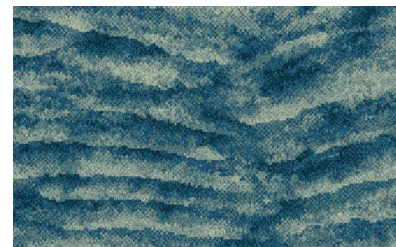
Click below to go direct to the range

## Arcus



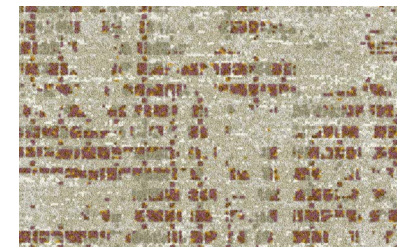
Click below to go direct to the range

## Esker



Click below to go direct to the range

## Moso



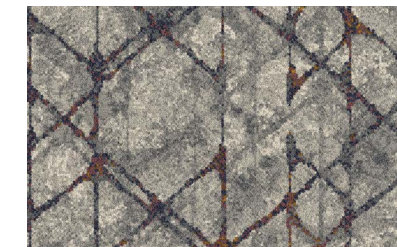
Click below to go direct to the range

## Nahla



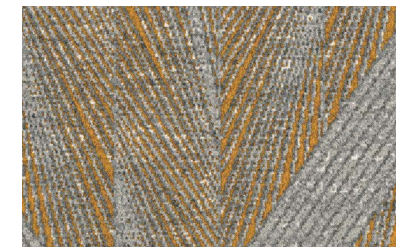
Click below to go direct to the range

## Vita



Click below to go direct to the range

## Zen







# Alder

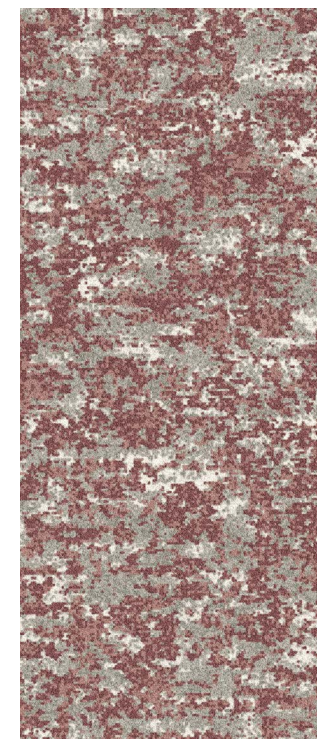
## Ornäs

177662-1



## Ribe

177650-6



## Yam

177650-8



## Kelp

177650-2



The hushed hues of Alder radiate with the soft, meandering patterns found on the bark of a Birch tree. The four contemporary colourways - Ornäs, Ribe, Yam and Kelp - are tempered by a distressed aesthetic that creates an enchantingly subtle narrative.





# Arcus

## Lumen

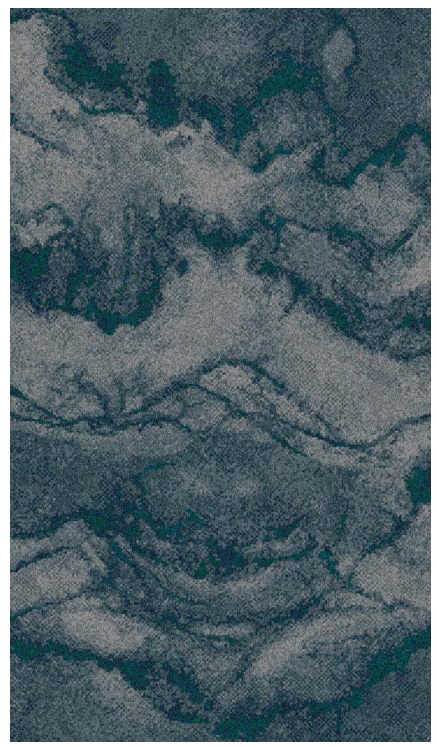
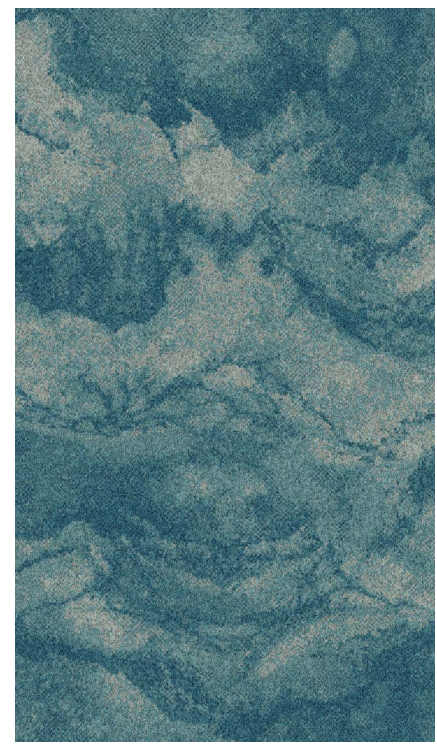
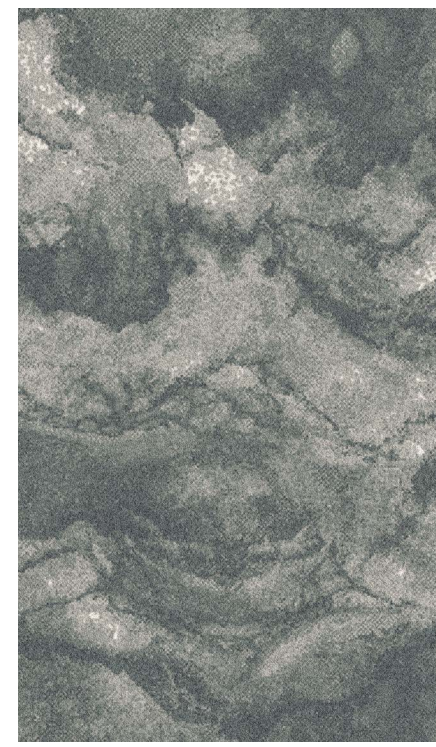
177849-2

## Electric

177849-1

## Storm

177781-1



Imitating the turbulent nature of clouds that form at the edge of a thunderstorm, Arcus evokes the expectant nature of weather. Available in three colourways - Lumen, Electric and Storm- this is a design that delivers a clear sense of drama.





# Esker

**Thar**

177053-18

**Sif**

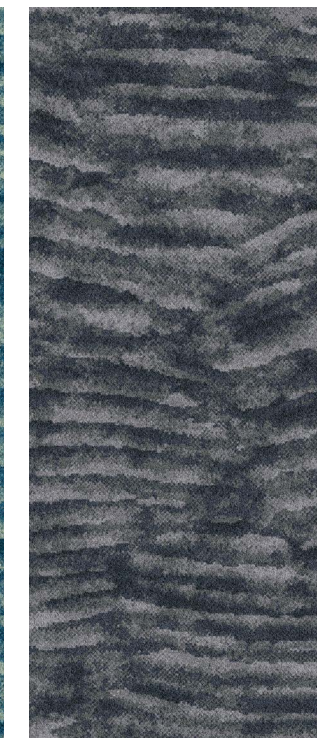
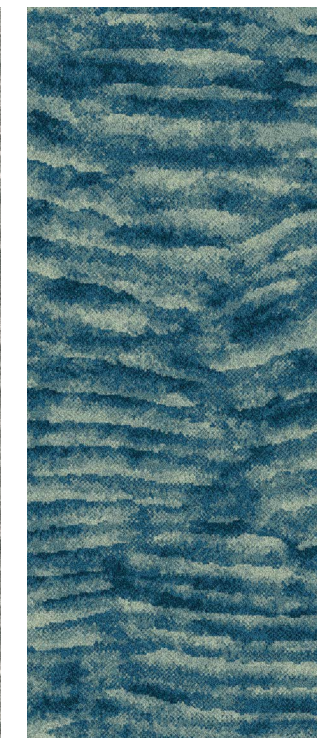
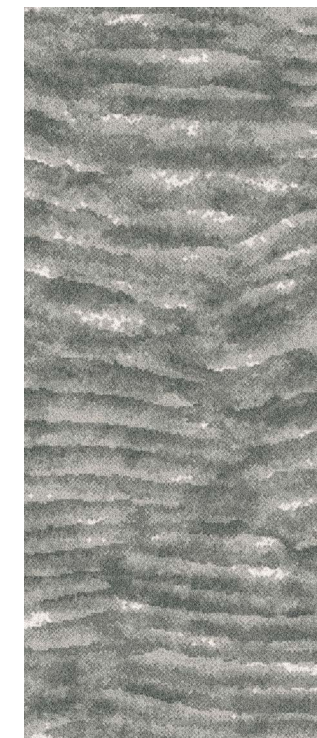
177053-1

**Azul**

177053-14

**Rift**

177053-17



Available in four colourways - Thar, Sif, Azul and Rift - Esker takes its name from the long ridges deposited by meltwater from a retreating glacier. These flowing striations form an intimate pattern of serenity.





# Moso

## Tansu

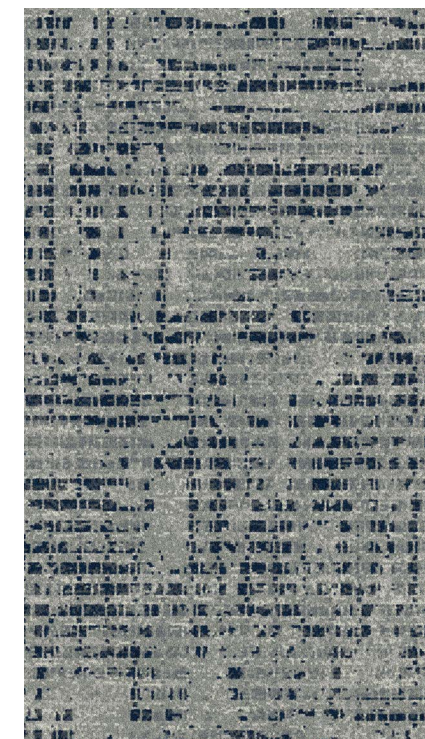
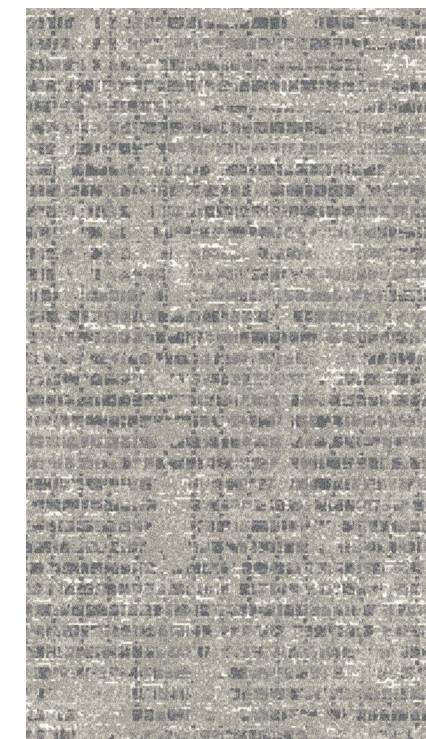
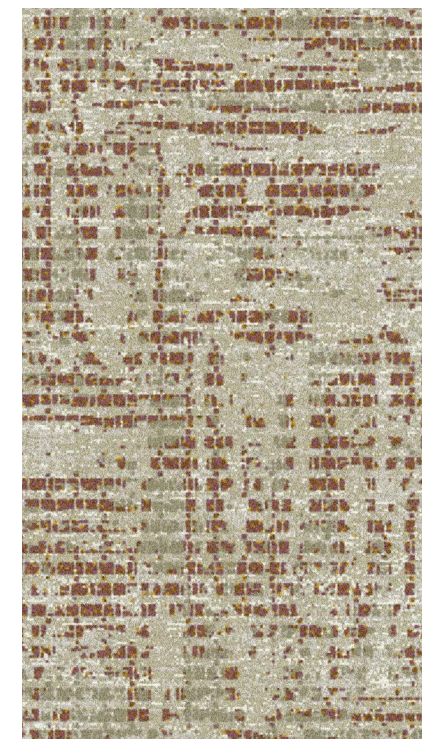
177852-1

## Lint

177851-1

## Char

177850-1



Influenced by the patterns of Moso, a type of bamboo native to China and Taiwan, this impactful design is available in three colourways – Tansu, Lint and Char. The layered, patina effect accentuates the organic aesthetics of nature.





# Nahla

## Zale

177714-1



## Unda

177864-1



## Bayou

177714-2



Reminiscent of the ripples left by rain droplets, Nahla means 'first drink of water'. The Arabic and African origin of the word resonates within the three colourways - Zale, Unda and Bayou - to create a mesmerising creative statement.







# Vita

## Origin

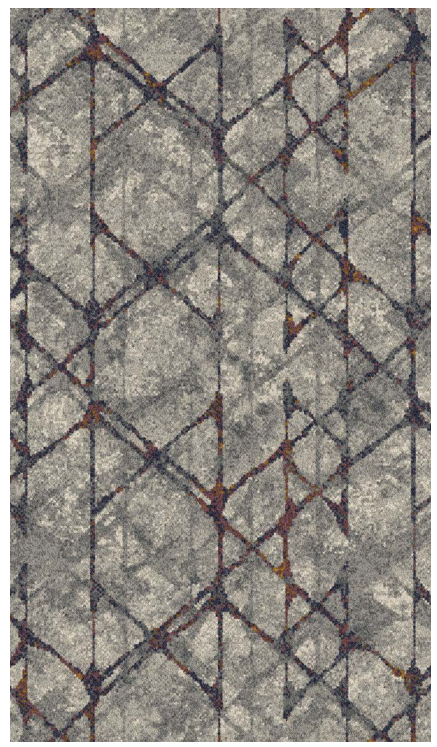
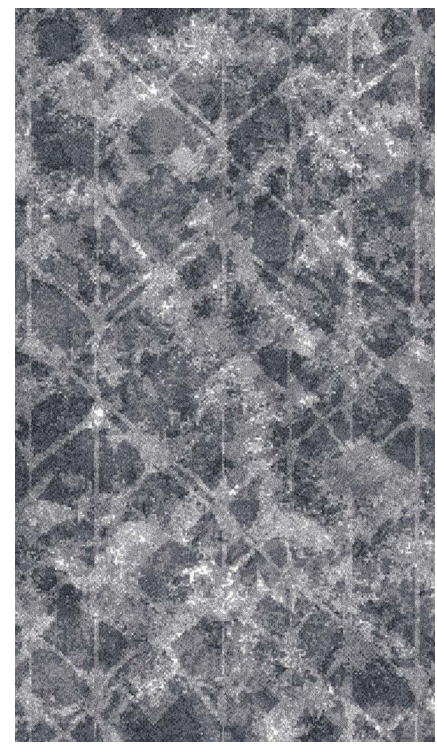
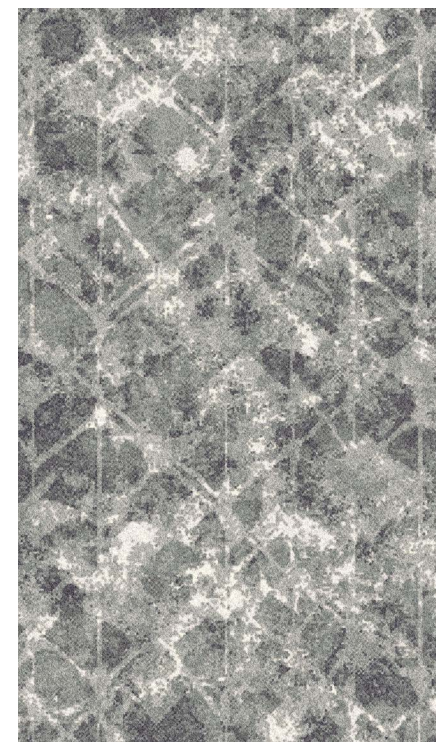
176669-2

## Alpha

176669-7

## Helix

177608-3



Reflecting the complexity of molecular structures, Vita is Latin 'for the course of one's life'. With three colourways - Origin, Alpha and Helix - the layered linear elements create three-dimensional depth for an emboldened design.





# Zen

## Inga

177584-1

## Mesa

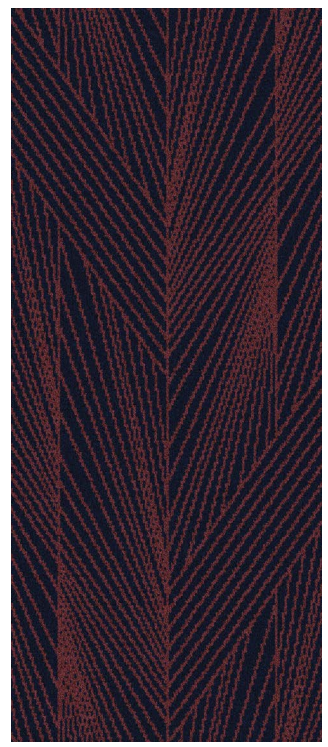
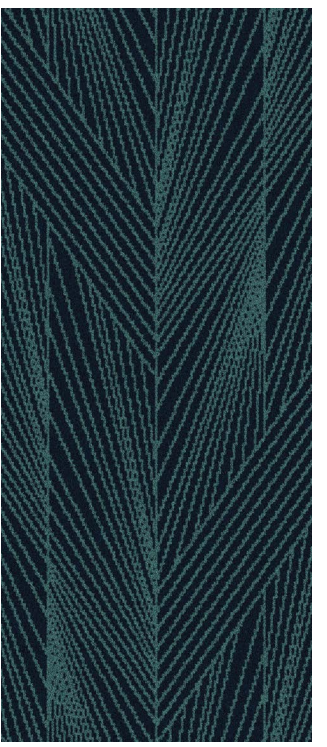
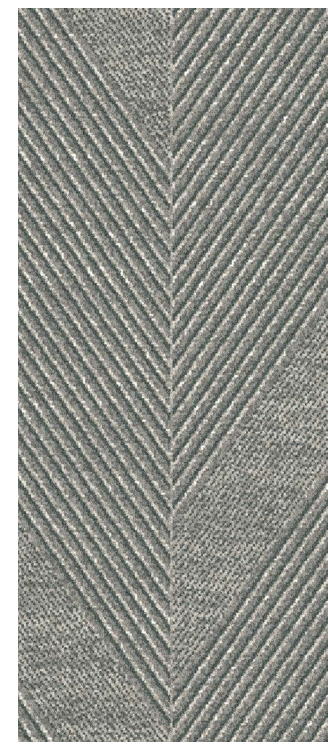
177848-1

## Moka

177656-2

## Yari

177656-3



The striking Zen designs encompass the new heights that can be reached when you are in a state of calm attentiveness. The four modern colourways, Inga, Mesa, Moka and Yari, elevate the transition of the textures to create a sense of energy.

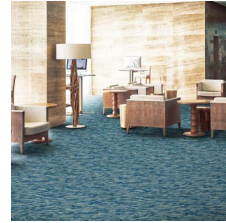




Alder



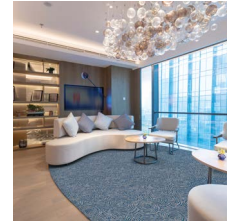
Arcus



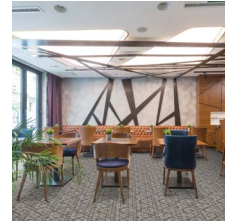
Esker



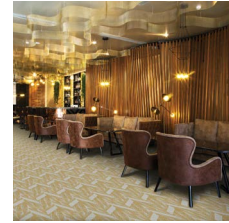
Moso



Nahla



Vita



Zen

ENGLISH

**Suitability**

Heavy Contract,  
Heavy Domestic

**Pile Yarn**

80% Wool (Moth resistant)  
20% Nylon

**Backing Yarn**

Polypropylene

**Width available**

4.00m (13' 1")

**Pile Height**

7.14mm (0.281")

**Pitch**

27.56 per dm (7 per inch)

**Rows**

31.50 per dm (8 per inch)

**Total Pile Weight**

1207g/m<sup>2</sup> (35.60 oz/yd<sup>2</sup>) +/-10%

**Please note:**

Carpet should be professionally laid according to BS 5325 ISO13746:2000 using good quality underlay

FRENCH

**Qualité**

Usage commercial intensif  
Usage domestique intensif

**Composition du Fil**

80% Laine (Résistant aux mites)  
20% Nylon

**Support dossier**

Polypropylène

**Largeur disponible**

4,00m

**Hauteur de velours**

7,14mm au dessus du dossier

**Serrage chaîne**

27,56 par 10cm

**Serrage trame**

31,50 par 10cm, serrage 8"

**Poids total de velours**

1207g/m<sup>2</sup> +/-10%

**A noter:**

Toute moquette doit être posée selon la norme BS 5325 ISO 13746:2000 en utilisant une thibaude de bonne qualité

GERMAN

**Qualität**

Starke Nutzung im Objektbereich  
Starke Nutzung im Privatbereich

**Polzusammensetzung**

80% Schurwolle (Mottenresistent)  
20% Nylon

**Rückenmaterial**

Polypropylene

**Lieferbreite**

4,00m

**Polhöhe**

7,14mm

**Kettdichte**

27,56 pro 10cm

**Schussdichte**

31,50 pro 10cm, 8 Schuss

**Poleinsatzgewicht**

1207g/m<sup>2</sup> +/-10%

**Bemerkung:**

Teppichboden sollte gemäß BS 5325 ISO 13746:2000 mit einer qualitativ hochwertigen Teppich-Unterlage verlegt werden

DESIGN INFO

| Design Name<br>Référence du dessin<br>Designname | Design Number<br>Référence du dessin<br>Designnummer | Colourway<br>Coloris<br>Farbnummer | Repeat Width x Length<br>Raccord Largeur x Longueue<br>Rapport Breite x Länge   |
|--|--|------------------------------------|---|
| <b>Alder</b><br>Pages 6-9                        | 177650-2<br>177650-6<br>177650-8<br>177662-1         | Kelp<br>Ribe<br>Yam<br>Ornäs       | <b>200cm</b> x 100.3cm Straight Match / Raccord Droit / Seite an Seite<br>(78.9" x 39.5" Straight Match / Raccord Droit / Seite an Seite) |
| <b>Arcus</b><br>Pages 10-13                      | 177781-1<br>177849-1<br>177849-2                     | Storm<br>Electric<br>Lumen         | <b>200cm</b> x 100.3cm Straight Match / Raccord Droit / Seite an Seite<br>(78.9" x 39.5" Straight Match / Raccord Droit / Seite an Seite) |
| <b>Esker</b><br>Pages 14-17                      | 177053-14<br>177053-17<br>177053-18<br>177053-1      | Azul<br>Rift<br>Thar<br>Sif        | <b>200cm</b> x 100.3cm Straight Match / Raccord Droit / Seite an Seite<br>(78.9" x 39.5" Straight Match / Raccord Droit / Seite an Seite) |
| <b>Moso</b><br>Pages 18-21                       | 177850-1<br>177851-1<br>177852-1                     | Char<br>Lint<br>Tansu              | <b>200cm</b> x 100cm Straight Match / Raccord Droit / Seite an Seite<br>(78.9" x 39.3" Straight Match / Raccord Droit / Seite an Seite)   |
| <b>Nahla</b><br>Pages 22-25                      | 177714-1<br>177714-2<br>177864-1                     | Zale<br>Bayou<br>Unda              | <b>200cm</b> x 100.3cm Straight Match / Raccord Droit / Seite an Seite<br>(78.9" x 39.5" Straight Match / Raccord Droit / Seite an Seite) |
| <b>Vita</b><br>Pages 26-29                       | 177608-3<br>176669-2<br>176669-7                     | Helix<br>Origin<br>Alpha           | <b>200cm</b> x 100.3cm Straight Match / Raccord Droit / Seite an Seite<br>(78.9" x 39.5" Straight Match / Raccord Droit / Seite an Seite) |
| <b>Zen</b><br>Pages 30-33                        | 177584-1<br>177848-1                                 | Inga<br>Mesa                       | <b>134cm</b> x 99cm Straight Match / Raccord Droit / Seite an Seite<br>(52.6" x 38.9" Straight Match / Raccord Droit / Seite an Seite)    |
|  | 177656-3<br>177656-2                                 | Yari<br>Moka                       | <b>67cm</b> x 99cm Straight Match / Raccord Droit / Seite an Seite<br>(26.3" x 38.9" Straight Match / Raccord Droit / Seite an Seite)     |

Whilst every effort is made to achieve accurate colour reproduction of products in this brochure, printing limitations can be misleading. Selection of products should be made from actual samples.

Bien que tous les efforts soient faits pour obtenir une reproduction fidèle des couleurs des moquettes dans cette brochure, les limitations d'impression peuvent être trompeuses. La sélection des produits doit être effectuée à partir d'échantillons réels.

Wir weisen darauf hin, daß wir akurate Farbgleichheit wie in unserer Broschüre gezeigt anstreben, jedoch kann diese vom Bild auf Grund von Druckeinschränkungen abweichen und daher ist es unbedingt wichtig, die Produkte anhand von tatsächlichen Musterstücken auszuwählen.





# natura

**UK**

[uclondon@ulstercarpets.com](mailto:uclondon@ulstercarpets.com)

**Ireland:**

[ucireland@ulstercarpets.com](mailto:ucireland@ulstercarpets.com)

**Europe:**

[uceurope@ulstercarpets.com](mailto:uceurope@ulstercarpets.com)

**Middle East:**

[ucdubai@ulstercarpets.com](mailto:ucdubai@ulstercarpets.com)

**North America:**

[ucamerica@ulstercarpets.com](mailto:ucamerica@ulstercarpets.com)

**Ulster Carpets Ltd**

Castleisland Factory, Craigavon

N.Ireland, BT62 1EE

T +44 (0) 28 3833 4433

ulster™

