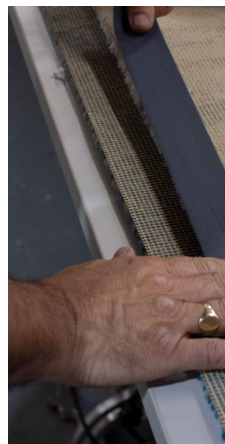
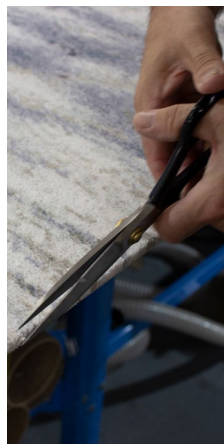
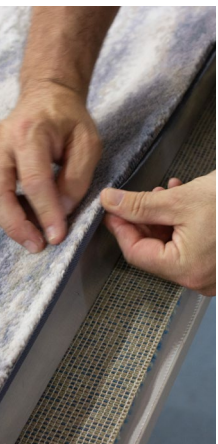
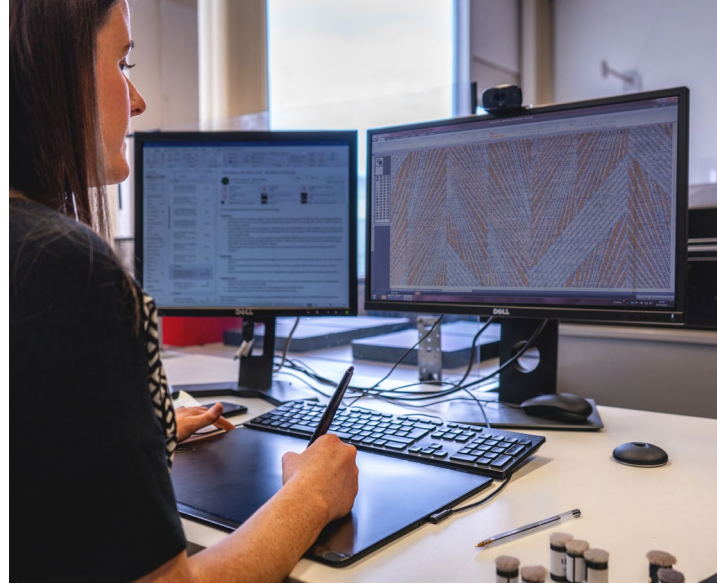




BY APPOINTMENT TO
HER MAJESTY THE QUEEN
CARPET MANUFACTURER
ULSTER CARPETS (HOLDINGS) LTD
COUNTY ARMAGH

ulster™

BESPOKE AXMINSTER RUGS



MADE TO MEASURE



From inspiration to realisation, our bespoke Axminster rugs service is made to measure.

Available in practically any size or shape, we design rugs that match your space before adding the perfect finishing touch with a selection of edging choices.

Bringing you the same expertise as our wall-to-wall carpets, every step of the rugs service is delivered by our dedicated in-house team.

DISTINCTIVE DESIGNS

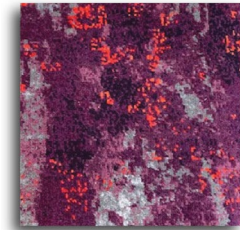
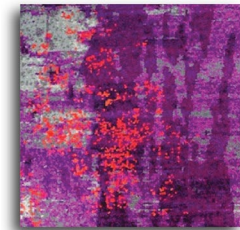


The only limit is your imagination.

Ulster's custom design service offers complete design freedom while meeting the demands of each individual project.

Our team of leading designers have years of experience working with multiple design complexities, taking inspiration from an idea, and turning it into a flooring work of art infused with your design philosophy.

If you need a creative spark to get started, you can find inspiration with our Rug Collection on [Design Portal](#) and in our [Rug Portfolio](#).



Design: 18100066 (2018 - Rug (1.7m x 2.7m))
 Project: NYX Holborn - (1147 Phase 2)
 Area: Custom
 Quantity: 1 x 2.7m
 Date: 2018
 Drawn: Registered to each design presentation made - 3
 1 073332 2 073249 3 073248 4 073487 5 073183 6 1209 7 073181 8 073485 9 083631 10 08012541 103142

ulster

Ulster Carpet Ltd.
 27, York Road, London, E1 8JQ
 Tel: 0203 234433



18100066 - Marlow - 1.7 x 2.7m
 This design is copyright © 2018 Ulster Carpet Ltd.



FINISHING

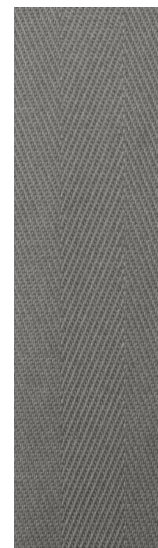
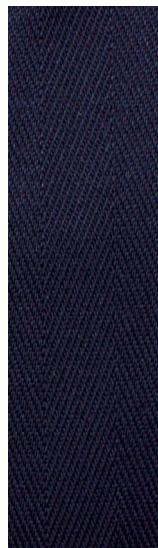


Narrow Binding

Creating a strong and effective finish, narrow binding is available in the 10 different colours below to match your design.

Blind Binding

An almost invisible edge that does not hide the side view of the tufts, adding depth to your finish.



SAND

BEIGE

STEEL BLUE

NAVY

CLARET

FOREST

STONE

ASH GREY

BLACK
PEPPERCORN

CHARCOAL

For exact colour references, please request a sample.

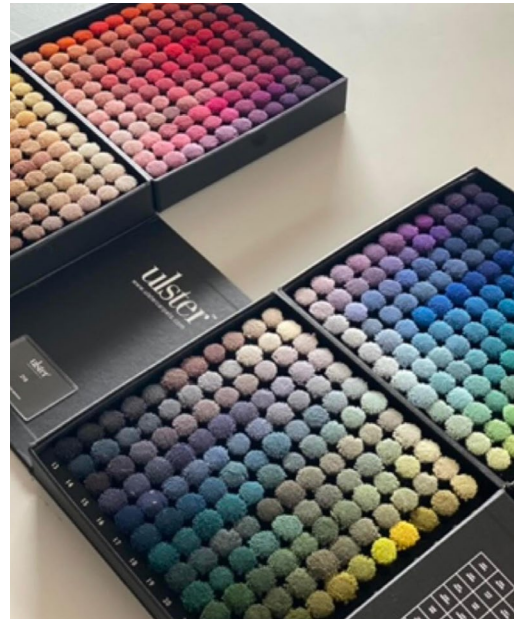
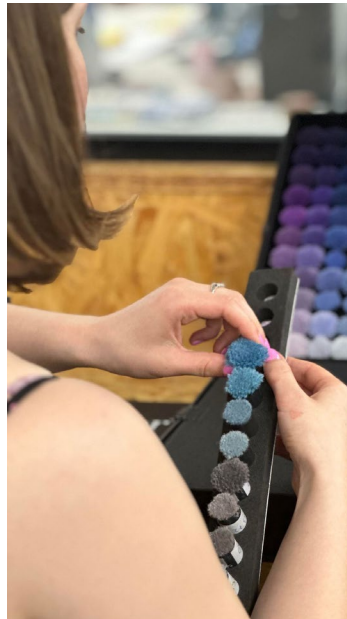
FINISHING



Whipping

Available in practically any colour, whipping adds a distinctive and professional finish to your rug.

Our Designers can assist you to select the right colour of whipping to complement your design.

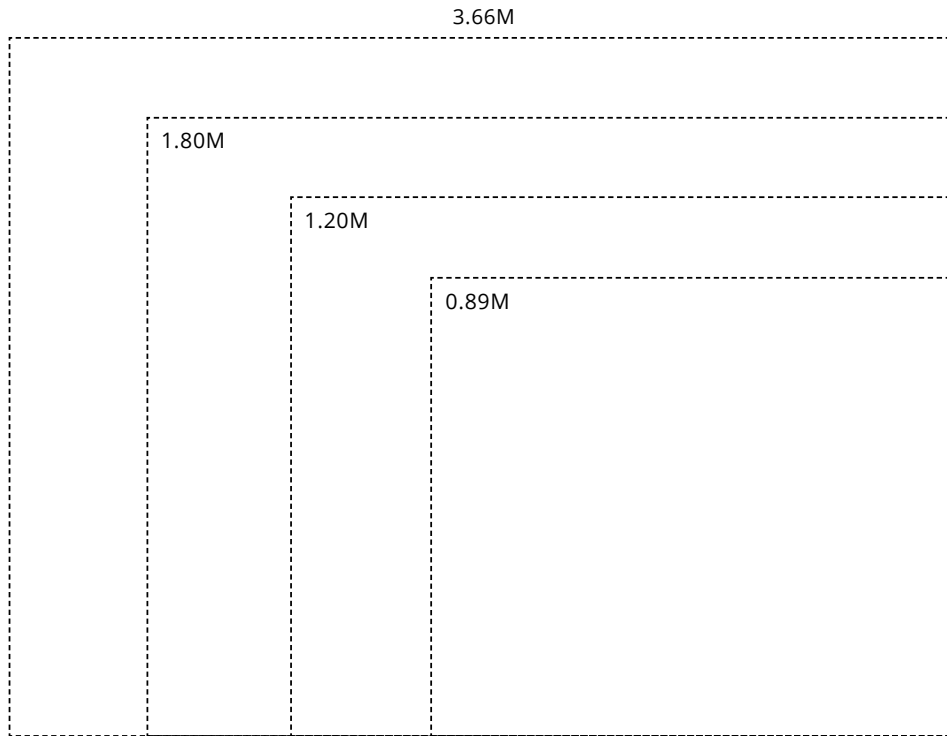


RUG SHAPES



We can create rugs in practically every shape imaginable. Speak to us to discuss the best options, including finishing styles, to suit your space.

REDUCE WASTE



The best way to reduce waste is to avoid creating it in the first place.

The diagram above is an example of optimising rug sizes on a 3.66m loom. With three different looms widths available, our Planning Team will guide you on the optimal rug size to that will create minimal waste and a cost-effective solution.

This is just one aspect of our commitment to building a sustainable future by manufacturing in an ethical manner that reduces our impact on the environment.

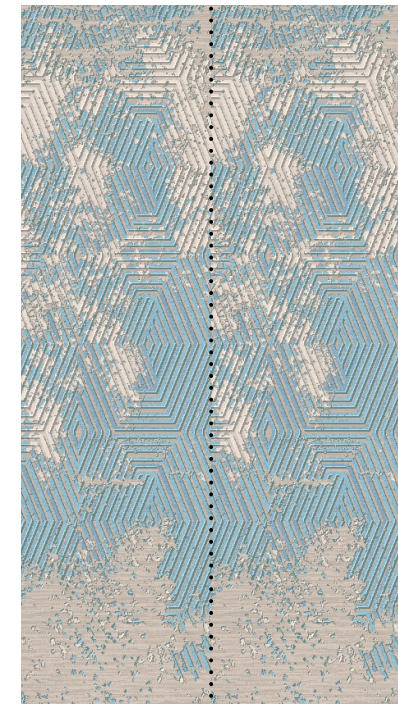
In this respect, we ensure that continual environmental performance improvements are achieved by compliance with all requirements of the Environmental Management System ISO14001. We are accredited to ISO 14001:2015 EMS 53967 Environmental Standard and ISO 9001:2015 Cert No. FM0877.

Our Sustainability Strategy underlines our long-term objective of becoming a Net Zero manufacturer.

[CLICK HERE](#) to read more.



A 2.40m x 2.40m rug woven on a 3.66m loom creates around **34% waste**.



Weaving two 2.20m x 2.40m rugs side by side reduces waste to **less than 2% on a 4.57m loom**.

The example above demonstrates how reducing a rug size by just 20cm and optimising the loom width can reduce waste by **almost 32%**.

TECHNICAL INFORMATION

Warranty

Rugs fall within a standard 2-year warranty.

Ulster Carpets guarantee the rug against any recognised and proven manufacturing or raw material defect.

Ulster Carpets undertakes to replace or repair (at its option subject to repair being possible without significantly diminishing the appearance of the carpet at the time of repair) any carpet which becomes defective through any proven manufacturing or raw material defect.

Fair wear and tear and accidental damage is exempt in all circumstances from the above guarantee.

Quality

Ulster Carpets manufacture under a quality systems BS EN ISO 9001: 2015 approved by the British Standards Institution.



Tolerance

Ulster Rugs are a woven product, exact sizes cannot be guaranteed on finished rugs and as such are subjected to +/- 2% tolerance.

It is recommended that attic stock is purchased with your rugs, our experienced planning team can advise of suitable attic stock quantities.

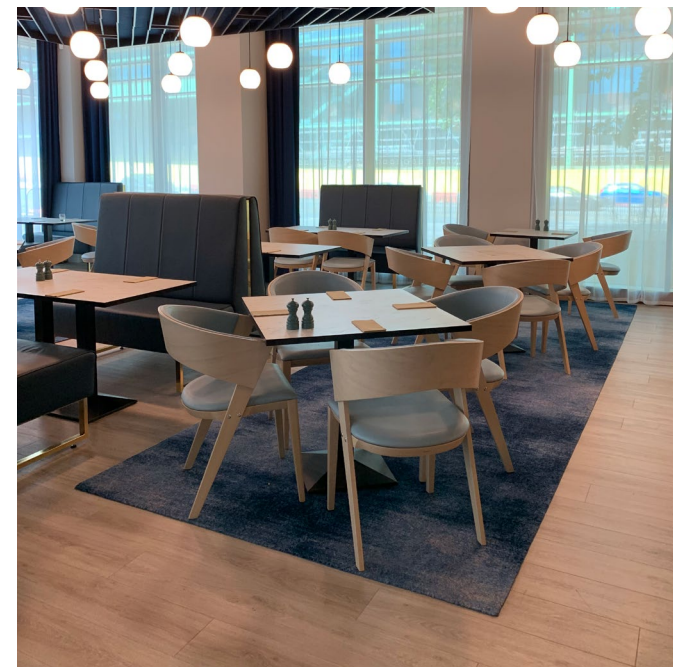
Antislip

Anti-slip matting is recommended and available to order with your rugs.

Design

As a loose laid rug is not installed under tension, any natural distortion in the weave can be exaggerated by your choice of design.

Please speak to your Ulster Account Manager to discuss design suitability.



RUG CARE AND MAINTENANCE

The cleaning and maintenance of Axminster wool rugs is not significantly different to the cleaning and maintenance of stretched in or double stick broadloom Axminster.

However, even when treated properly, loose rugs are less dimensionally stable than fitted broadloom carpet and therefore, it is important to take further steps in the handling, storage and after care of your rug.

When your rugs first arrive, do not store them in their packaging for a significant amount of time. Ulster recommends, upon delivery of your rugs, they are immediately removed from packaging, unrolled, and laid flat. Upon first unrolling, it is normal to find the rugs can appear to lift at corners and ripple in the middle, it is normally because the product has been rolled up tightly for secure transit. This can be rectified using the below steps:

- Reverse Rolling – roll the rug the other way, pile side out.
- Leave the runner rolled like this for a couple of days.
- Try doing this along the length first and then again along the width.

Preventative Maintenance

In most locations, the primary cause of loss of appearance is soiling. This can occur through two primary sources: dirt tracked in from outside on the soles of shoes; or grease walked in from kitchens. Ulster recommends the use of entrance mats when entering the property.

Rugs are loose products and caution should be taken when handling your rug, including the handling of furniture which sits on top of your rug. When moving furniture, it is important not to drag it over your rug as this will prevent rips at weak points of the material.

Rugs should be stored correctly when not in use. Ideally, any rugs which are stored when not in use, should be stored flat, in a dry clean area. However, if the uplifted rug is to be stored on roll, the rolling needs to be crease free and the edges should remain parallel to avoid imparting skew in the structure. If the rug is stored for any significant time it should be rerolled at regular intervals to avoid pressure marking. It should be in a clean, dry place to prevent mildew.

Loose rugs may be cleaned in the same way that installed carpets are cleaned but particular attention should be made to ensure there is no over wetting of rugs. When wet, ensure the rug is completely dry before placing it back down in place. Also take care not to over wet your rug when cleaning flooring or furniture around the rug.

[Follow link](#) to full care and maintenance guide.



ulster™

www.ulstercarpets.com

TEL: +44 (0)28 3833 4433
E: marketing@ulstercarpets.com
www.ulstercarpets.com