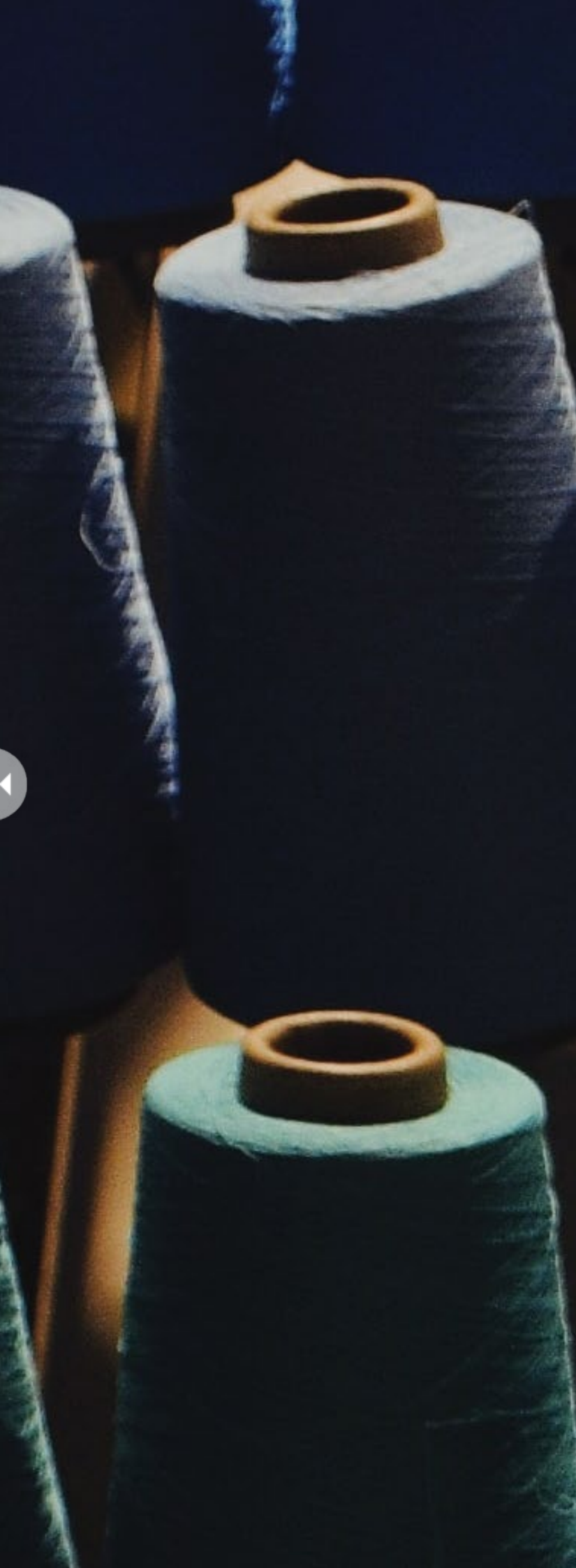




**THE  
CONTRACT STOCK  
GUIDE**





# Welcome

When a project does not require a bespoke product, our Contract Stock ranges offer an attractive alternative.

As well as high quality and durable carpet, you can enjoy the added advantages of readily available samples, matching batches and a quick turnaround.

We have divided this guide into ranges which have their suitable locations easily identified - **Public Areas, Corridors, Meeting Rooms, Bedroom & Suites, and Ballrooms & Prefunction Spaces.** This will help you quickly locate the ideal Ulster carpet for your project.

Whilst every effort is made to achieve accurate colour reproduction of products and colour palettes in this brochure, printing limitations can be misleading. Selection of products should be made from actual samples.

## Suitability Guide

- [10](#) Natura
- [16](#) Vescent
- [22](#) Watercolours
- [28](#) Ulster Velvet
- [34](#) Fusion
- [38](#) Open Spaces
- [48](#) Grange Wilton
- [52](#) Anatolia
- [58](#) Athenia
- [62](#) Boho
- [66](#) Braeburn
- [70](#) Beaumont
- [74](#) Glenavy
- [78](#) Glendun
- [82](#) Glenmoy
- [86](#) Habitüs
- [92](#) Sheriden
- [96](#) Tazmin
- [102](#) York Wilton

	PUBLIC AREAS	CORRIDORS	MEETING ROOMS	BEDROOM & SUITES	BALLROOMS & PREFUNCTION SPACES
<a href="#">10</a> Natura	●	●	●	●	○
<a href="#">16</a> Vescent	●	●	●	●	●
<a href="#">22</a> Watercolours	●	●	●	●	●
<a href="#">28</a> Ulster Velvet	●	●	●	●	○
<a href="#">34</a> Fusion	●	●	●	●	○
<a href="#">38</a> Open Spaces	○	○	○	●	○
<a href="#">48</a> Grange Wilton	●	●	●	●	○
<a href="#">52</a> Anatolia	●	●	●	●	○
<a href="#">58</a> Athenia	○	○	○	●	○
<a href="#">62</a> Boho	○	○	○	●	○
<a href="#">66</a> Braeburn	●	●	●	●	○
<a href="#">70</a> Beaumont	●	●	●	●	●
<a href="#">74</a> Glenavy	○	○	○	●	○
<a href="#">78</a> Glendun	●	●	●	●	○
<a href="#">82</a> Glenmoy	●	●	●	●	○
<a href="#">86</a> Habitüs	○	○	○	●	○
<a href="#">92</a> Sheriden	●	●	●	●	●
<a href="#">96</a> Tazmin	○	○	○	●	○
<a href="#">102</a> York Wilton	●	●	●	●	○



# THE ART *of* ULSTER

With some of the world's leading carpet designers based in our offices across the world, every day we create what we call The Art of Ulster.

This concept is based around utilising the large canvas that flooring offers to create bespoke designs that would not look out of place in an art gallery. Instead, however, our inspiring creations are found in the world's leading hotels, casinos and cruise ships.

This artistic flair is also evident in our Contract Stock range.

Many of our designers are talented artists in their own right and we have been able to combine these creative skills with state-of-the-art technology that gives them complete design freedom.

Thanks to our patented weaving technology, known as PSYLO™, the only limit to carpet design is your imagination. With the freedom to choose from a superior number of colours over and above the industry standard - without the need for a repeating pattern - there are endless possibilities with a bespoke Ulster carpet.

From bold and brave colours to calm and contemplative designs, The Art of Ulster can create carpet designs that deliver large scale artistry alongside intricate detail.







## 2025 Targets


---


As we continue to demonstrate our commitment to reducing our carbon footprint and achieving our ultimate goal of attaining carbon neutral business operations, we have put in place a strategic plan to achieve a range of targets by 2025.

 **50%** Reduction in Carbon Emissions

 **19%** Reduction in Energy

 **5%** Reduction in Water Consumption

 **5%** Reduction in Packaging

 **20%** Reduction in Waste



Design: Natura Alder Ornäs



# natura

Axminster

Widths: 4m (13'1")

Largeurs: 4.00m

Breiten: 4.00m

Pile Yarn: 80% Wool (moth resistant) / 20% Nylon

Composition du fil: 80% Laine (résistant aux mites) / 20% Nylon

Polzusammensetzung: 80% Schurwolle (mottenresistent) / 20% Nylon

**Suitability:** Heavy Contract including Various Public Areas, Corridors, Meeting Rooms, and Bedrooms and Suites.

**Qualité:** Usage commercial intensif compris Zones publiques, Couloirs, Salles de réunion, et Chambres et suites.

**Qualität:** Starke Nutzung im Objektbereich einschließlich verschiedener öffentlicher Bereiche, Korridore, Tagungsräume sowie Schlafzimmer und Suiten.





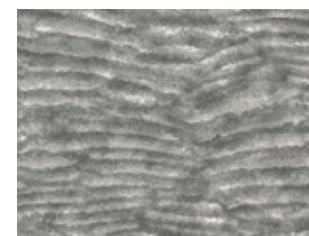
Design: Natura Alder Kelp

# Esker

177053-18 Esker Thar



177053-1 Esker Sif



177053-14 Esker Azul



177053-17 Esker Rift



# Moso

177852-1 Moso Tansu



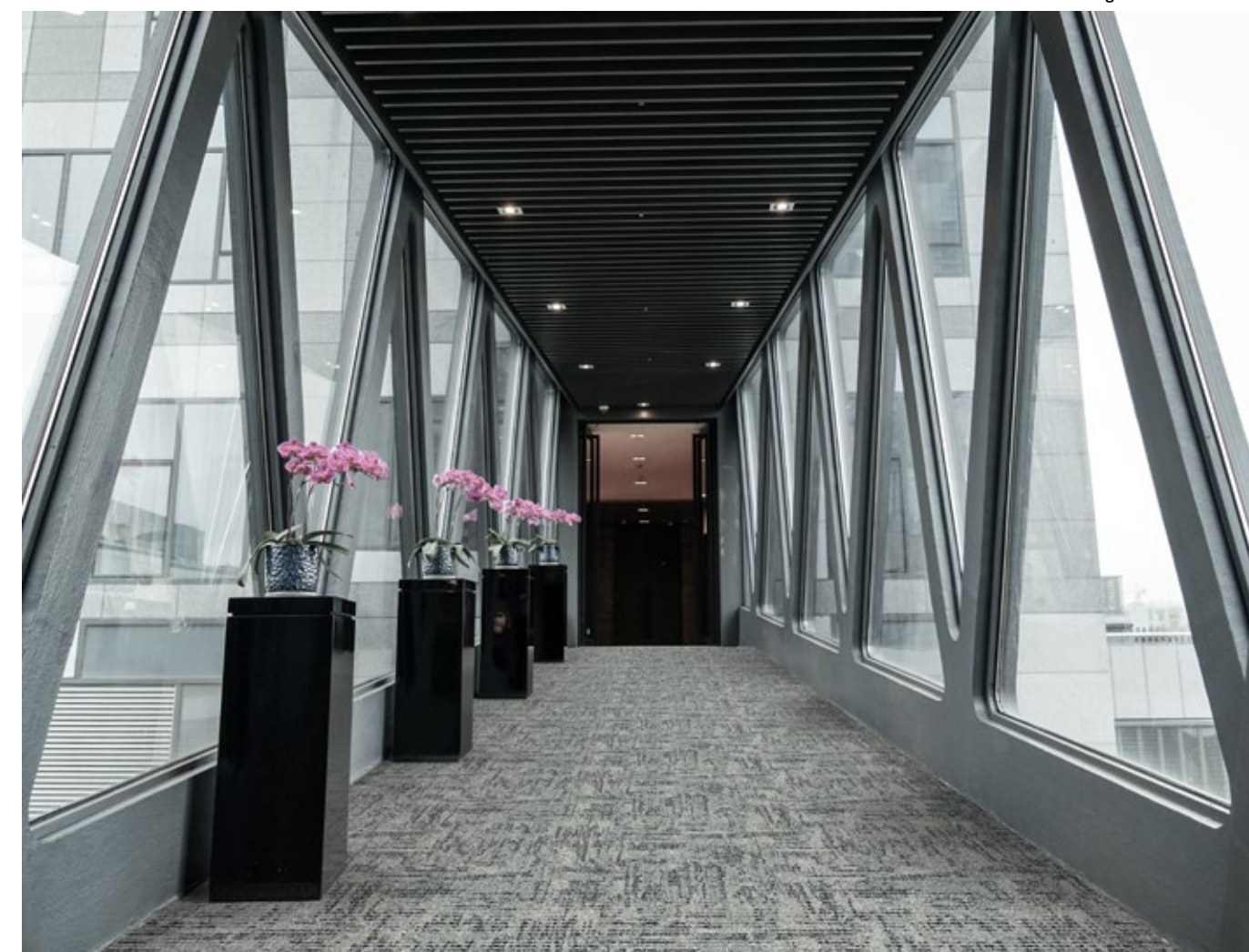
177851-1 Moso Lint



177850-1 Moso Char



Design: Natura Moso Char



# Alder

177650-8 Alder Yam



177662-1 Alder Ornäs



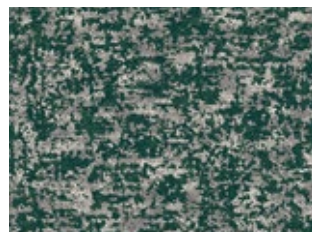
177849-2 Arcus Lumen



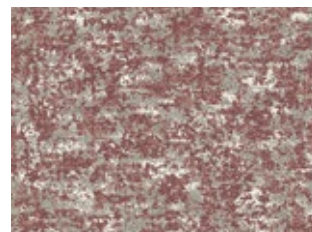
177781-1 Arcus Storm



177650-2 Alder Kelp



177650-6 Alder Ribe



177849-1 Arcus Electric





Design: Natura Nahla Bayou

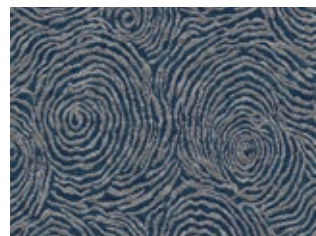


# Nahla

177864-1 Nahla Unda



177714-2 Nahla Bayou

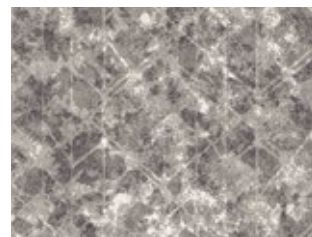


177714-1 Nahla Zale

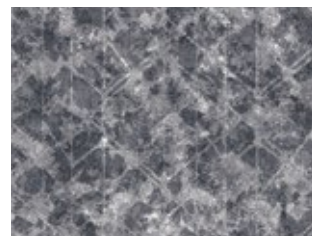


# Vita

176669-2 Vita Origin



176669-7 Vita Alpha



177608-3 Vita Helix

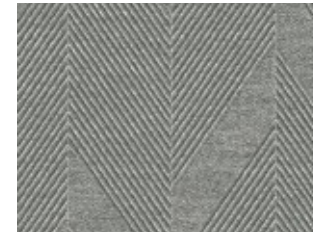


# Zen

177848-1 Zen Mesa



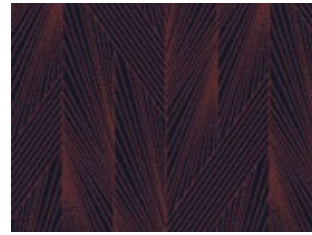
177584-1 Zen Inga



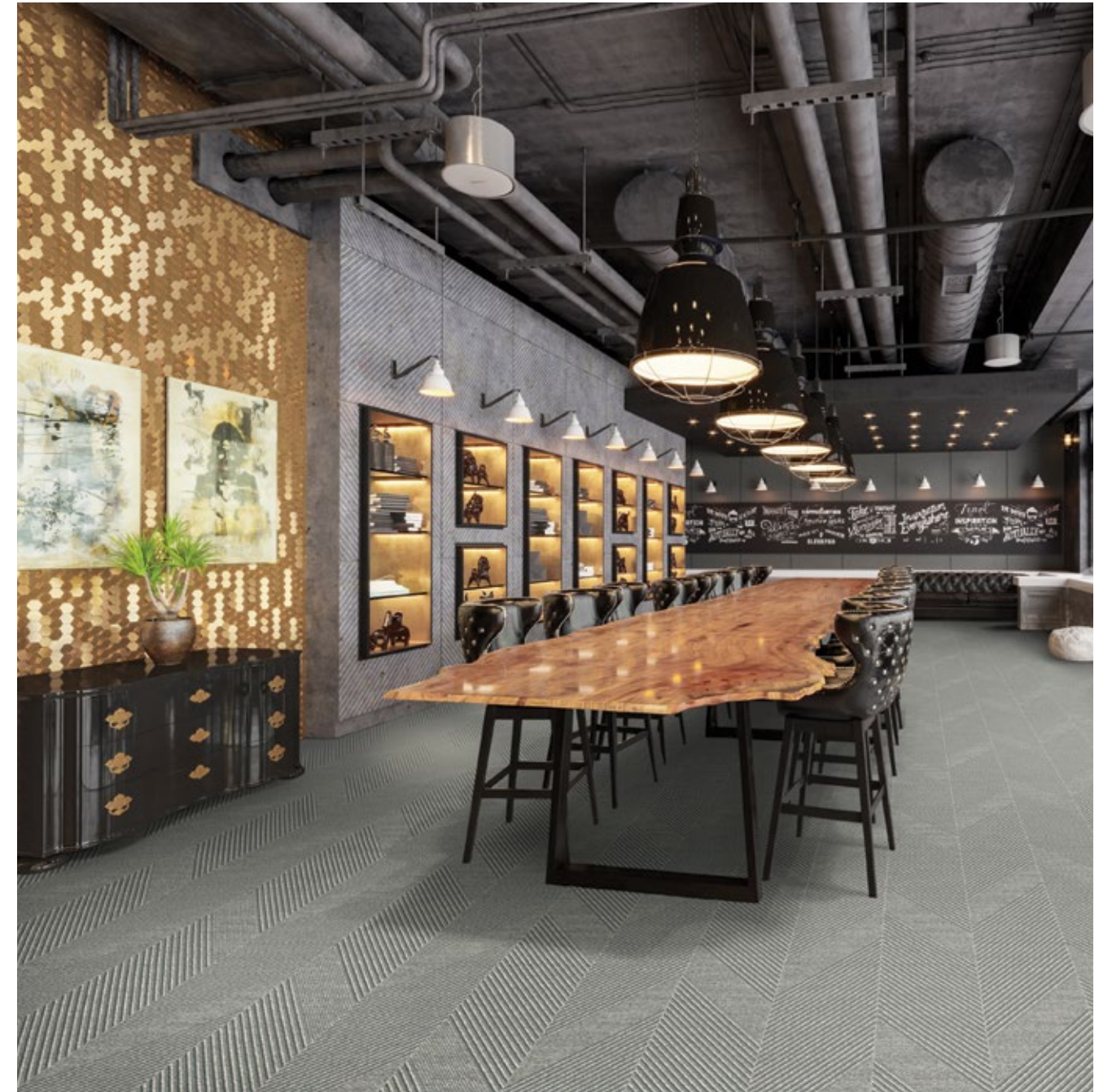
177656-2 Zen Moka



177656-3 Zen Yari



Design: Natura Zen Inga







Design: Vescent Linea Citrine

## V E S C E N T

---

Axminster

Widths: 4m (13'1")

Largeurs: 4,00m

Breiten: 4,00m

Pile Yarn: 80% Wool (moth resistant) / 20% Nylon

Composition du fil: 80% Laine (résistant aux mites) / 20% Nylon

Polzusammensetzung: 80% Schurwolle (mottenresistent) / 20% Nylon

**Suitability:** Heavy Wear applications including various Public Areas, Corridors, Meeting Rooms, Bedrooms and Suites and Ballrooms and Prefunction Spaces.

**Qualité:** Usage commercial intensify compris Zones publiques, Couloirs, Salles de réunion, et Chambres et suites Salles de bal et espaces de préfonction.

**Qualität:** Starke Nutzung im Objektbereich einschließlich verschiedener öffentlicher Bereiche, Korridore, Tagungsräume sowie Schlafzimmer und Ballsäle und Veranstaltungsräume.

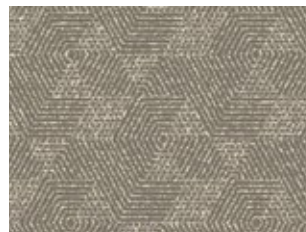


Design: Vescent Arbor Obi

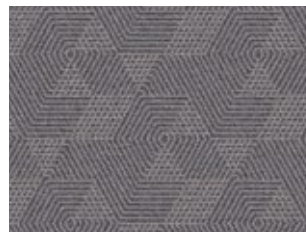


## arbor

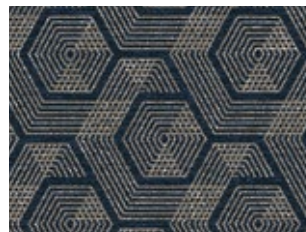
149693-5 Elixir



149693-6 Alloy



155293-1 Obi

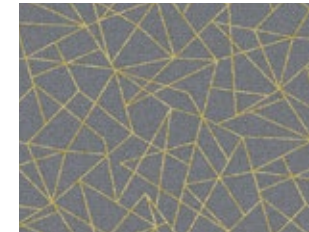


## LINEA

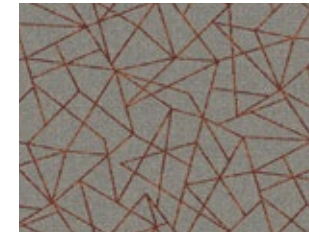
153391-10 Zinc



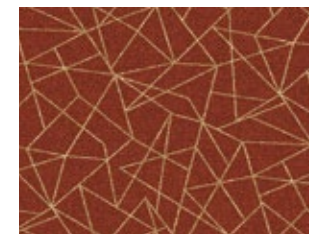
153391-9 Citrine



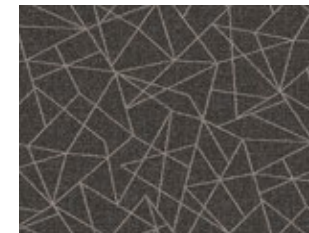
153391-1 Ignis



153391-8 Cadmium



153391-5 Quartz



## NEBULA

147178-18 Salt



147178-13 Mica



147178-12 Ochre



147178-16 Zaffre



147178-8 Asphalt





Design: Vescent Calx Alumina

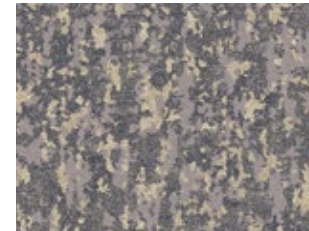


### CALX

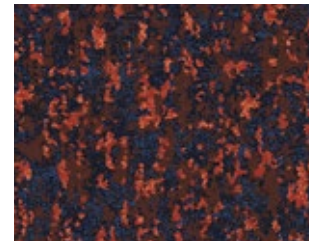
147144-7 Alumina



147144-3 Mineral



155146-1 Oxide



### Nexus

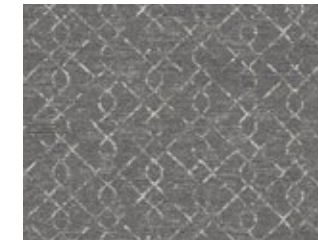
151781-1 Chroma



151906-1 Pewter



149736-1 Onyx



### VAPOR

153443-1 Haar



156352-1 Ebony



Design: Vescent Nexus Pewter







Design: Watercolours Amulet Ombre

## WATERCOLOURS

Axminster

Widths: 4.57m, 3.66m, 2.74m, 1.83m & 0.91m (15', 12', 9', 6' & 3')

Largeurs: 4.57m, 3.66m, 2.74m, 1.83m & 0.91m

Breiten: 4.57m, 3.66m, 2.74m, 1.83m & 0.91m

Pile Yarn: 80% Wool (moth resistant) / 20% Nylon

Composition du fil: 80% Laine (résistant aux mites) / 20% Nylon

Polzusammensetzung: 80% Schurwolle (mottenresistent) /

20% Nylon

**Suitability:** Heavy Contract including All Public Areas, Corridors, Meeting Rooms, and Bedrooms and Suites.

**Qualité:** Usage commercial intensif compris Zones publiques, Couloirs, Salles de réunion, et Chambres et suites.

**Qualität:** Starke Nutzung im Objektbereich einschließlich verschiedener öffentlicher Bereiche, Korridore, Tagungsräume sowie Schlafzimmer und Suiten.



Design: Watercolours Mineral Alchemy



### Amulet

91/20092 Seaglass



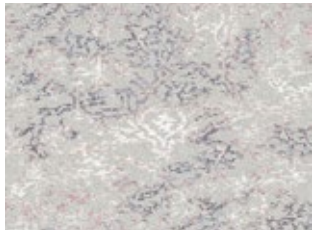
11/20090 Ombre



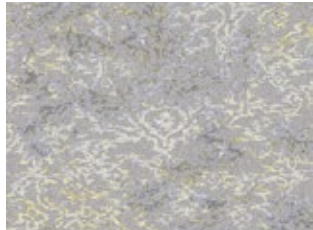
12/20091 Brimstone



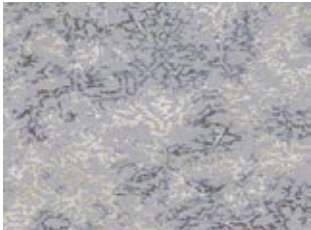
13/20103 Celeste



92/20093 Atmosphere



93/20094 Alchemy



15/20103 Savannah



31/20103 Ocean



Design: Watercolours Amulet Ombre





Design: Watercolours Amulet Atmosphere



## Mineral

91/20089 Seaglass



13/20089 Celeste



11/20089 Ombre



14/20089 Zenith



12/20089 Brimstone



15/20089 Savannah



92/20089 Atmosphere



32/20089 Azores



93/20089 Alchemy





Design: Ulster Velvet Phantom



## ULSTER *Velvet*

Wilton

Widths: 5m, 4m, 3m, 2m & 1m (16'4", 13'1", 9'10", 6'6" & 3'3")

Largeurs: 5m, 4m, 3m, 2m & 1m

Breiten: 5m, 4m, 3m, 2m & 1m

Pile Yarn: 80% Wool (moth resistant) / 20% Nylon

Composition du fil: 80% Laine (résistant aux mites) / 20% Nylon

Polzusammensetzung: 80% Schurwolle (mottenresistent) /

20% Nylon

**Suitability:** Heavy Contract including various Public Areas, Meeting Rooms, and Bedrooms and Suites.

**Qualité:** Usage commercial intensif compris Zones publiques, Salles de réunion, et Chambres et suites.

**Qualität:** Starke Nutzung im Objektbereich einschließlich verschiedener öffentlicher Bereiche, Tagungsräume sowie Schlafzimmer und Suiten.



Design: Ulster Velvet Chinchilla



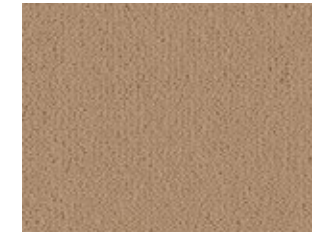
W2015 Suede



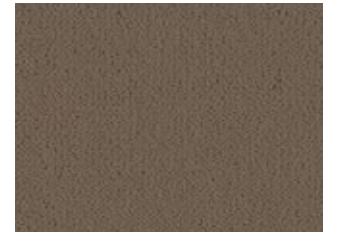
W2619 Impala



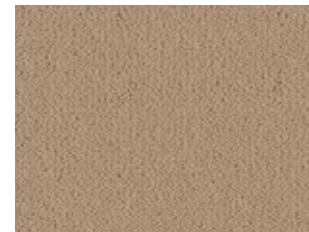
W2615 Mead



W2617 Mushroom



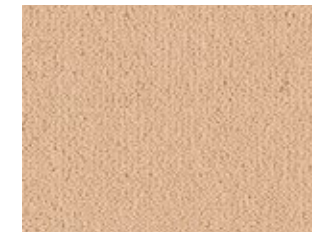
W2013 Oatmeal



W2614 Mullion



W2605 Jersey



W837 Champagne



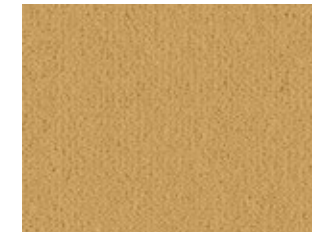
W2023 Straw



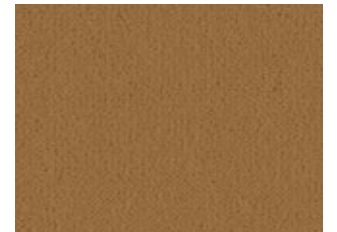
W2607 Fauna



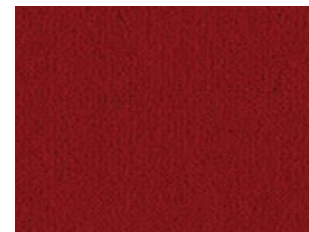
W9702 Pyramid



W8618 Honey Gold



W8830 Imperial Red



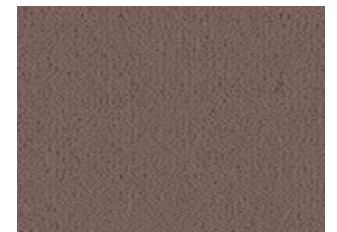
W9711 Burgundy



W2630 Sugar Plum



W2012 Mouse



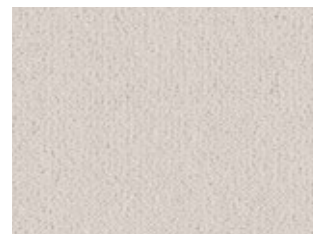
Design: Ulster Velvet Larch



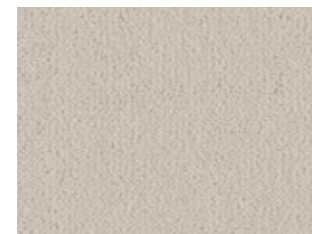
Design: Ulster Velvet Teal



W2618 Merino



W2620 Chinchilla



W2613 Dovecote



W9209 Canvas



W2621 Tankard



W2616 Cloister



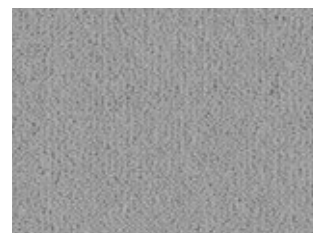
W2627 Barnstone



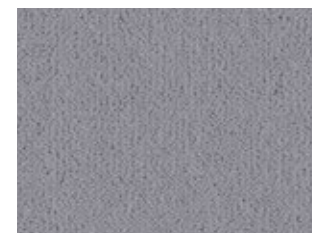
W2622 Elephant



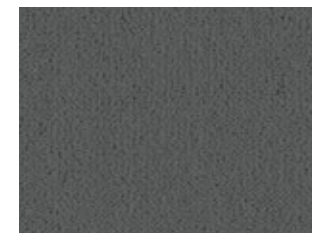
W2625 Larch



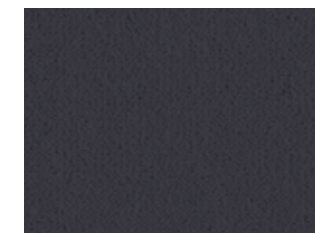
W2626 Phantom



W2628 Stove



W9718 Charcoal



W8625 Aspen Green



W835 Jade



W2629 Teal



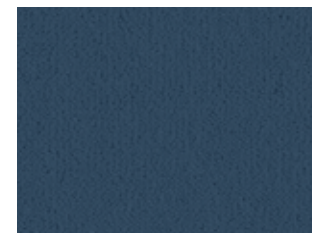
W2624 Glacier



W2623 Neptune



W8313 Windsor Blue



W9203 Royal Blue





Design: Fusion Sonic



# FUSION

Axminster

Widths: 4.00m (13'1")

Largeurs: 4.00m

Breiten: 4.00m

Pile Yarn: 80% Wool (moth resistant) / 20% Nylon

Composition du fil: 80% Laine (résistant aux mites) / 20% Nylon

Polzusammensetzung: 80% Schurwolle (mottenresistent) / 20% Nylon

Suitability: Heavy Contract including various Public Areas, Corridors, Meeting Rooms, and Bedrooms and Suites.

Qualité: Usage commercial intensif y compris Zones publiques, Salles de réunion, et Chambres et suites.

Qualität: Starke Nutzung im Objektbereich einschließlich verschiedener öffentlicher Bereiche, Tagungsräume sowie Schlafzimmer und Suiten.



Design: Fusion Tone Tungsten

"...Fusion is a unique range with striking patterns and colourways, designed to make an impact."

Tone

31/20086 Electric



32/20086 Denim



11/20086 Marquee



Reverb

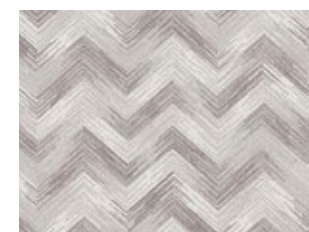
31/20088 Electric



32/20088 Denim



11/20088 Marquee

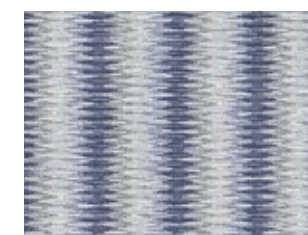


Sonic

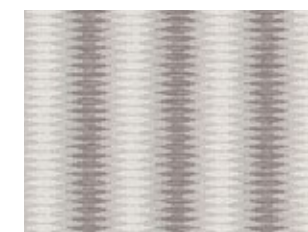
31/20087 Electric



32/20087 Denim



11/20087 Marquee



Design: Fusion Sonic Electric



Design: Open Spaces Raglan Silica



## ØPENSPACES

---

Tufted Loop

Widths: 5m, 4m, 3m, 2m & 1m (16'4", 13'1", 9'10", 6'6" & 3'3")

Largeurs: 5m, 4m, 3m, 2m & 1m

Breiten: 5m, 4m, 3m, 2m & 1m

Pile Yarn: 100% New Zealand Wool (moth resistant)

Composition du fil: 100% Laine de Nouvelle Zélande (résistant aux mites)

Polzusammensetzung: 100% Neuseeland Schurwolle (mottenresistent)

Suitability: Moderate Wear applications including Bedrooms and Suites.

Qualité: Usage commercial modéré compris les chambres et les suites.

Qualität: Leichte Anwendung im Objektbereich, einschließlich Schlafzimmer und Suiten.

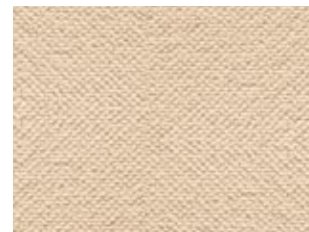


Design: Open Spaces Napier Riptide

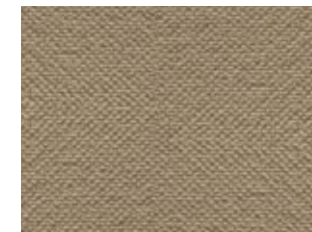


# Auckland

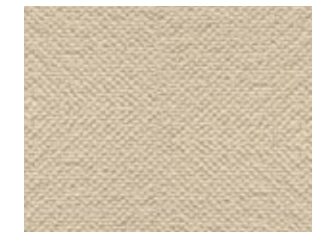
10/1428 Calico



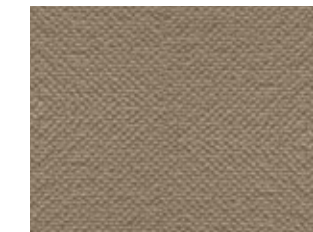
62/1428 Hammock



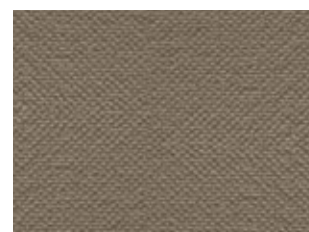
71/1428 Coast



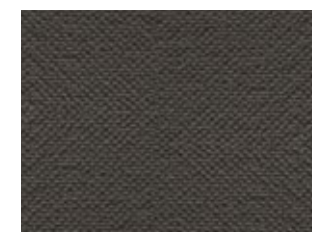
25/1428 Driftwood



28/1428 Mortar



74/1428 Anvil



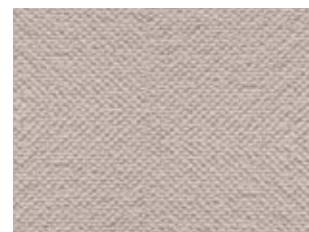
70/1428 Grayling



72/1428 Sidewalk



11/1428 Ermine



73/1428 Glint



75/1428 Concrete



76/1428 Paraffin



Design: Open Spaces Queenstown Cadet





## Dubai

10/1319 Snowdrop



15/1319 Lemongrass



31/1319 Pearl



61/1319 Limewash



20/1319 Blonde



43/1319 Demerara



30/1319 Malt



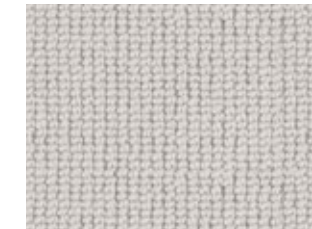
71/1319 Dapple



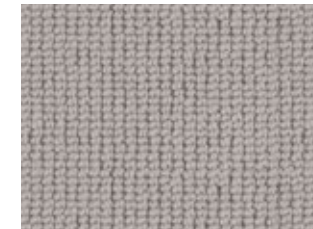
12/1319 Polar



72/1319 Alpine



74/1319 Tor



35/1319 Glaze



76/1319 Echo



"...Every journey to a luxury carpet begins by selecting the right wool. At Ulster Carpets, we only source the best wool from the UK, Ireland and New Zealand to provide the perfect starting point."

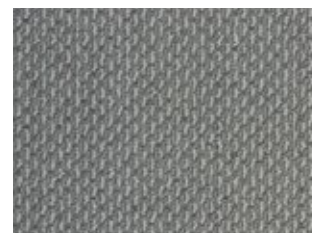


Design: Open Spaces Raglan Mata

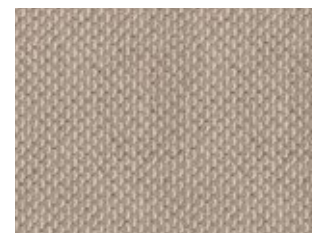


### Napier laneve

76/1455 Basalt



30/1455 Burlap



72/1455 Cape



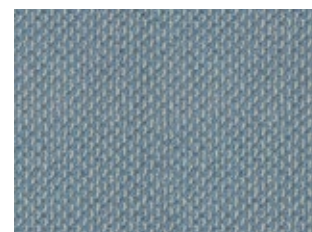
70/1455 Crest



20/1455 Mata



64/1455 Riptide



12/1455 Silica



74/1455 Marl



### Raglan laneve

76/1450 Basalt



30/1450 Burlap



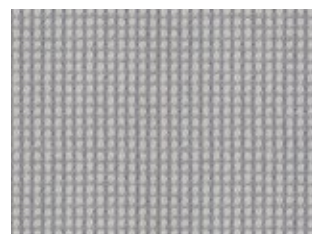
72/1450 Cape



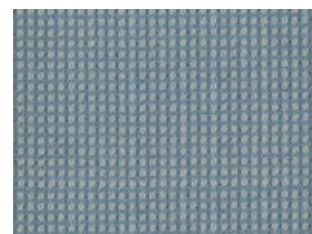
70/1450 Crest



20/1450 Mata



64/1450 Riptide



12/1450 Silica



74/1450 Marl







Wellington Stripe 

40/1433 Linnet



20/1433 Reed



10/1433 Quay



60/1433 Carbon



Queenstown 

20/1431 Crystal Beige



25/1431 Bunting



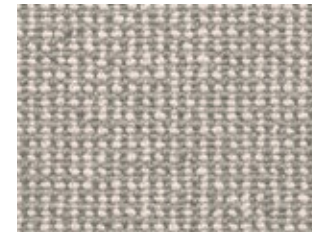
63/1431 Quill



64/1431 Jute



70/1431 Swedish Grey



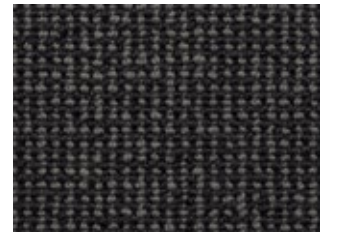
66/1431 Awning



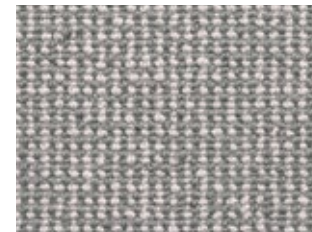
68/1431 Nova



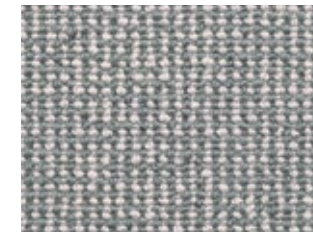
75/1431 Furnace Black



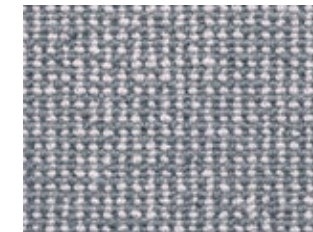
80/1431 Delft



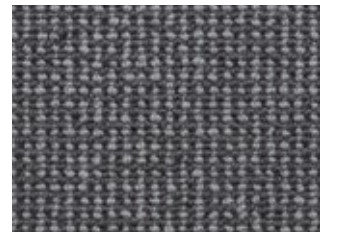
60/1431 Baltic



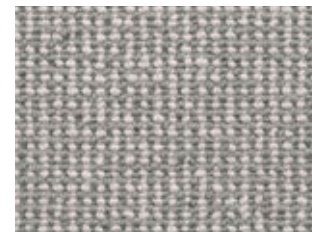
76/1431 Cadet



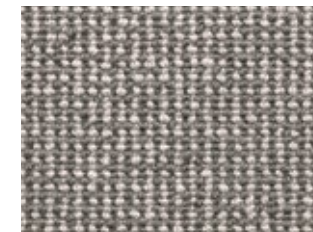
77/1431 Ink



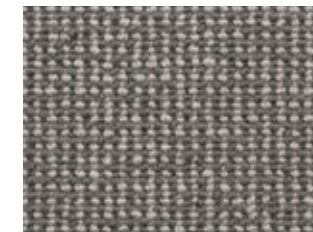
71/1431 Gull



72/1431 Urban



73/1431 Whale





Design: Grange Wilton Woad



# GRANGE

## WILTON

---

Wilton

Widths: 5m, 4m, 3m, 2m & 1m (16'4", 13'1", 9'10", 6'6" & 3'3")

Largeurs: 5m, 4m, 3m, 2m & 1m

Breiten: 5m, 4m, 3m, 2m & 1m

Pile Yarn: 80% Wool (moth resistant) / 20% Nylon

Composition du fil: 80% Laine (résistant aux mites) / 20% Nylon

Polzusammensetzung: 80% Schurwolle (mottenresistent) / 20% Nylon

**Suitability:** Heavy Contract including various Public Areas, Meeting Rooms, and Bedrooms and Suites.

**Qualité:** Usage commercial intensif y compris Zones publiques, Salles de réunion, et Chambres et suites.

**Qualität:** Starke Nutzung im Objektbereich einschließlich verschiedener öffentlicher Bereiche, Tagungsräume sowie Schlafzimmer und Suiten.



G1009 Beeswax



G1001 Angora



G1028 Woburn



G1015 Woolsack



G1018 Whisper



G1029 Millstone



G1004 Flagstone



G1005 Partridge



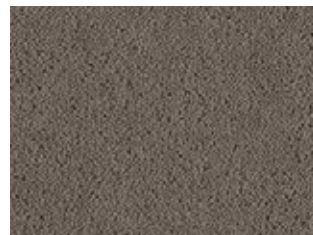
G1021 Mist



G1019 Greyhound



G1016 Lowry



G1008 Moorland



G1011 Pantry



G1007 Spelt



G1002 Wattle



G1006 Otter



G1012 Tallow



G1013 Romney



G1017 Giltwood



G1003 Coir



G1010 Grenadier Red



G1023 Red Setter



G1024 Kew



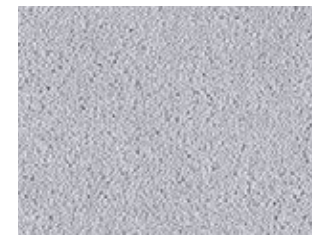
G1014 Appleby



Design: Grange Wilton Greyhound



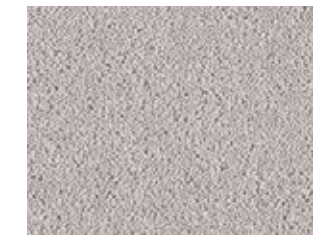
G1039 Mistral



G1026 Sea Salt



G1027 Priory



G1040 Fleet



G1030 Cygnet



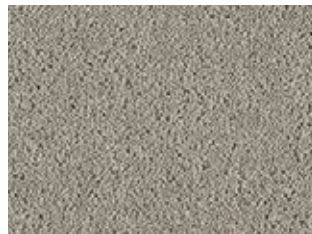
G1025 Silversmith



G1033 Sawgrass



G1022 French Grey



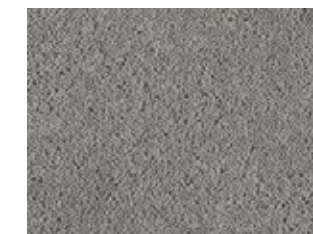
G1037 Celadon



G1034 Gorge



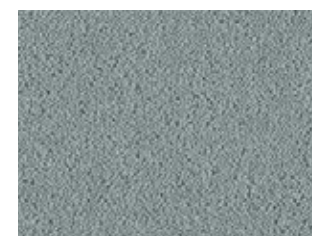
G1032 Dolomite



G1031 Cavern



G1038 Samphire



G1035 Woad



G1036 Hudson



G1020 Brunel





Design: Anatolia Shirvan Oasis



# ANATOLIA

Axminster

Widths: 4.57m, 3.66m, 2.74m, 1.83m & 0.91m (15', 12', 9', 6' & 3')

Largeurs: 4.57m, 3.66m, 2.74m, 1.83m & 0.91m.

Breiten: 4.57m, 3.66m, 2.74m, 1.83m & 0.91m

Pile Yarn: 80% Wool (moth resistant) / 20% Nylon

Composition du fil: 80% Laine (résistant aux mites) / 20% Nylon

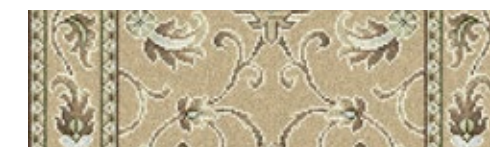
Polzusammensetzung: 80% Schurwolle (mottenresistent) / 20% Nylon

Suitability: Heavy Contract including various Public Areas, Corridors, Meeting Rooms, and Bedrooms and Suites.

Qualité: Usage commercial intensif y compris Zones publiques, Couloirs, Salles de réunion, et Chambres et suites.

Qualität: Starke Nutzung im Objektbereich einschließlich verschiedener öffentlicher Bereiche, Korridore, Tagungsräume sowie Schlafzimmer und Suiten.

Axminster Runner / Borders



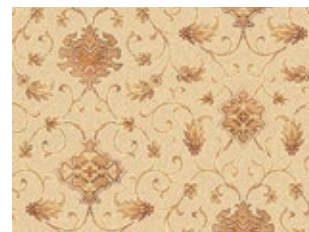
12.7cm,  
69cm

12.7cm,  
69cm





42/2287 Medallion Lotus



43/2287 Medallion Tunis



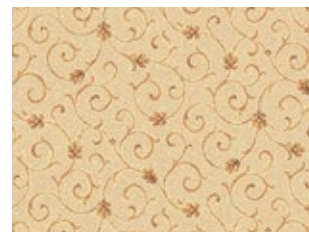
72/2287 Medallion Isis



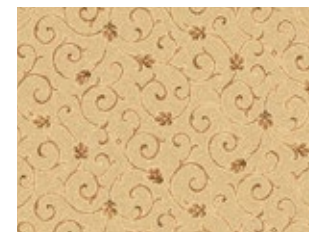
81/2293 Medallion Fez



42/2288 Scroll Lotus



43/2288 Scroll Tunis



72/2288 Scroll Isis



81/2298 Scroll Fez



42/2289 Runner Lotus



43/2289 Runner Tunis



72/2289 Runner Isis



81/2299 Runner Fez



41/2287 Medallion Dune



11/2287 Medallion Delta



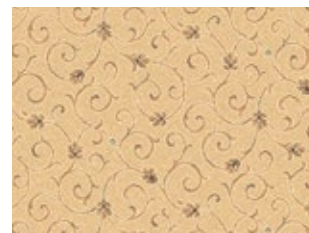
52/2287 Medallion Luxor



21/2374 Shirvan Petra Red



41/2288 Scroll Dune



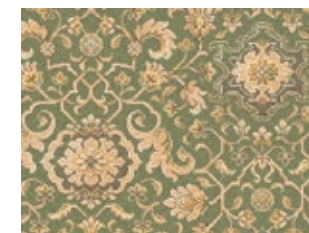
11/2288 Scroll Delta



52/2288 Scroll Luxor



71/2623 Shirvan Oasis



41/2289 Runner Dune



11/2289 Runner Delta



52/2289 Runner Luxor





Design: Anatolia Medallion Souk



31/2287 Medallion Bedouin



92/2287 Medallion Aswan



93/2287 Medallion Souk



31/20101 Scroll Bedouin



92/20101 Scroll Aswan



93/20101 Scroll Souk



31/20102 Runner Bedouin



92/20102 Runner Aswan



93/20102 Runner Souk



Design: Anatolia Scroll Aswan





Design: Athenia Black Pindot



# Athenia

Axminster

Widths: 4.57m, 3.66m, 2.74m, 1.83m & 0.91m (15', 12', 9', 6' & 3')

Largeurs: 4.57m, 3.66m, 2.74m, 1.83m & 0.91m.

Breiten: 4.57m, 3.66m, 2.74m, 1.83m & 0.91m

Pile Yarn: 80% Wool (moth resistant) / 20% Nylon

Composition du fil: 80% Laine (résistant aux mites) / 20% Nylon

Polzusammensetzung: 80% Schurwolle (mottenresistent) / 20% Nylon

Suitability: Moderate Contract including Bedrooms and Suites.

Qualité: Usage commercial modéré des chambres et des suites.

Qualität: Leichte Anwendung im Objektbereich einschließlich Schlafzimmer und Suiten.

**Axminster Runner / Borders**



17.4cm 17.4cm  
34.5cm 34.5cm  
69cm



Design: Athenia Black Pindot



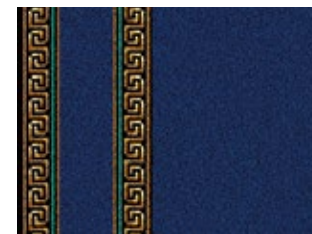
12/2566 Motif Royal Blue



12/2572 Pindot Royal Blue



12/2583 Runner Royal Blue



4/2566 Motif Green



4/2572 Pindot Green



4/2583 Runner Green



45/2566 Motif Pale Green



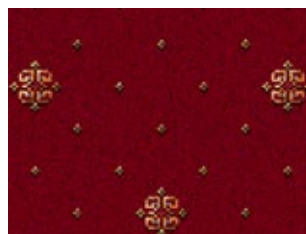
45/2572 Pindot Pale Green



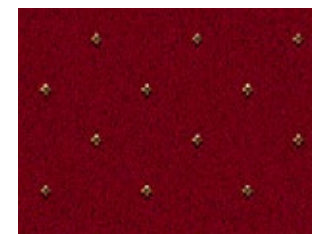
45/2583 Runner Pale Green



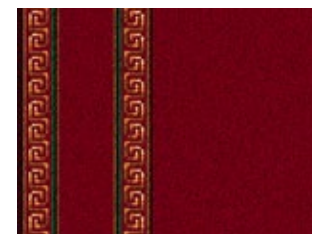
10/2566 Motif Red



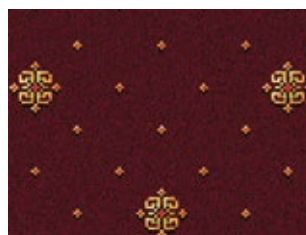
10/2572 Pindot Red



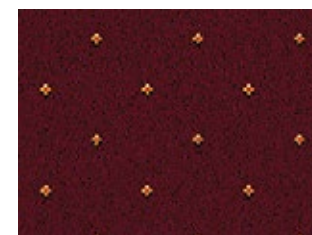
10/2583 Runner Red



22/2566 Motif Wine



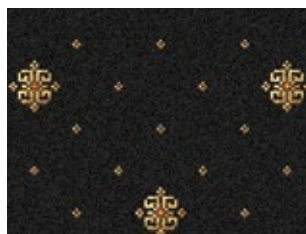
22/2572 Pindot Wine



22/2583 Runner Wine



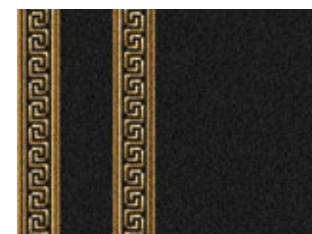
91/2707 Motif Black



91/2572 Pindot Black



91/2711 Runner Black







# BOHO

Axminster

Widths: 4m, 3m, 2m & 1m (13'1", 9'10", 6'6" & 3'3")

Largeurs: 4m, 3m, 2m & 1m

Breiten: 4m, 3m, 2m & 1m

Pile Yarn: 80% Wool (moth resistant) / 20% Nylon

Composition du fil: 80% Laine (résistant aux mites) / 20% Nylon

Polzusammensetzung: 80% Schurwolle (mottenresistent) / 20% Nylon

**Suitability:** Moderate Contract including Bedrooms and Suites.

**Qualité:** Usage commercial modéré comprenant des chambres et des suites.

**Qualität:** Leichte Anwendung im Objektbereich einschließlich Schlafzimmer und Suiten.





Design: Boho Hamilton Summer Breeze

### Hamilton

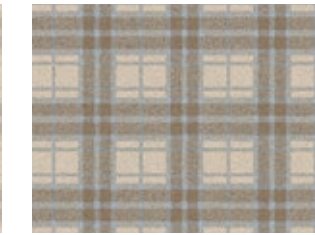
11/30006 Honesty



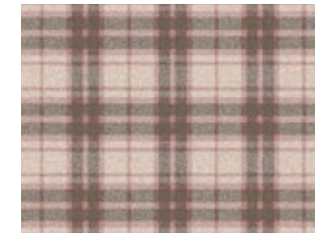
91/30006 Moon Shimmer



31/30006 Summer Breeze

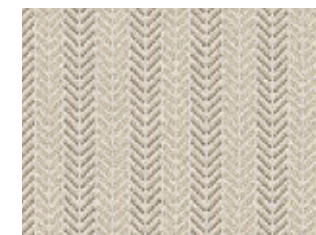


01/30006 Tea Rose

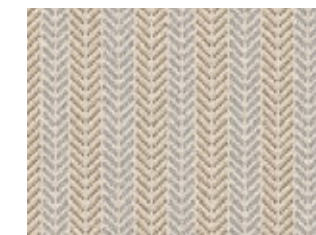


### Hemingway

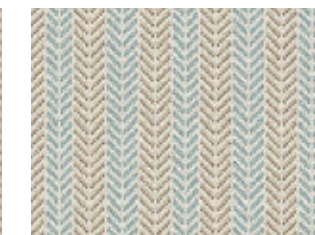
11/30004 Honesty



91/30004 Moon Shimmer

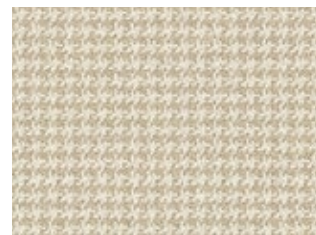


31/30004 Summer Breeze

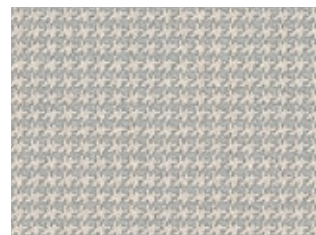


### Chic

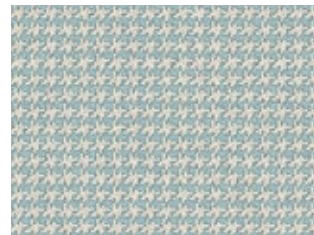
11/30002 Honesty



91/30002 Moon Shimmer



31/30002 Summer Breeze

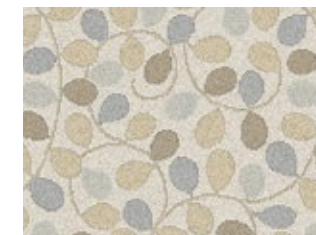


01/30002 Tea Rose

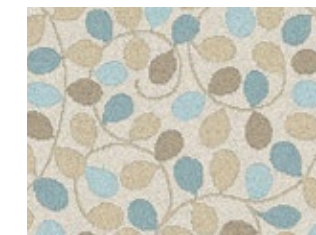


### Rhapsody

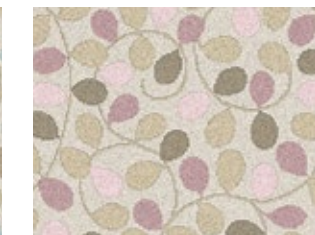
91/30005 Moon Shimmer



31/30005 Summer Breeze



01/30005 Tea Rose



### Bloomsbury

31/30003 Summer Breeze



01/30003 Tea Rose



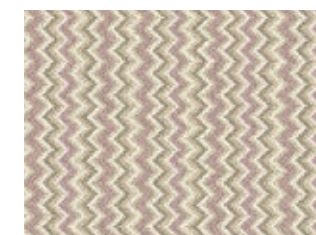
Design: Boho Moon Shimmer Chic

### Tribe

31/30001 Summer Breeze



01/30001 Tea Rose



Design: Boho Bloomsbury Summer Breeze



Design: Braeburn Estuary



## Braeburn

Axminster

Widths: 4.57m, 3.66m, 2.74m, 1.83m & 0.91m (15', 12', 9', 6' & 3')

Largeurs: 4.57m, 3.66m, 2.74m, 1.83m & 0.91m.

Breiten: 4.57m, 3.66m, 2.74m, 1.83m & 0.91m

Pile Yarn: 80% Wool (moth resistant) / 20% Nylon

Composition du fil: 80% Laine (résistant aux mites) / 20% Nylon

Polzusammensetzung: 80% Schurwolle (mottenresistent) /

20% Nylon

**Suitability:** Heavy Contract including Various Public Areas, Corridors, Meeting Rooms, and Bedrooms and Suites.

**Qualité:** Usage commercial intensif y compris Zones publiques, Couloirs, Salles de réunion, et Chambres et suites.

**Qualität:** Starke Nutzung im Objektbereich einschließlich alle öffentlicher Bereiche, Korridore, Tagungsräume sowie Schlafzimmer und Suiten.



Design: Braeburn Myrtle



93/20084 Biscay



92/20084 Sea Holly



91/20084 Estuary



94/20084 Forge



71/20084 Petrel



72/20084 Myrtle



01/20084 Tayberry



Design: Braeburn Biscay





Design: Beaumont Inkstone



# BEAUMONT

Axminster

Widths: 4.57m, 3.66m, 2.74m, 1.83m & 0.91m (15', 12', 9', 6' & 3')

Largeurs: 4.57m, 3.66m, 2.74m, 1.83m & 0.91m.

Breiten: 4.57m, 3.66m, 2.74m, 1.83m & 0.91m

Pile Yarn: 80% Wool (moth resistant) / 20% Nylon

Composition du fil: 80% Laine (résistant aux mites) / 20% Nylon

Polzusammensetzung: 80% Schurwolle (mottenresistent) / 20% Nylon

**Suitability:** Heavy Contract including all Public Areas, Meeting Rooms, and Bedrooms and Suites.

**Qualité:** Usage commercial intensif y compris Zones publiques, Salles de réunion, et Chambres et suites.

**Qualität:** Starke Nutzung im Objektbereich einschließlich verschiedener öffentlicher Bereiche, Tagungsräume sowie Schlafzimmer und Suiten.



Design: Beaumont Cairn



93/20016 Granary



11/20016 Chalk Downs



91/20016 Turtle Dove



94/20016 Cairn



71/20016 Quail



52/20016 Hickory



92/20016 Inkstone



14/20016 Osprey



12/20016 Brindle



15/20016 Grouse



48/20016 Croft Gold



47/20016 Antique Green



Design: Beaumont Brindle





Design: Glenavy Romaza



# GLENAVY

Axminster

Widths: 4.57m, 3.66m, 2.74m, 1.83m & 0.91m (15', 12', 9', 6' & 3')

Largeurs: 4.57m, 3.66m, 2.74m, 1.83m & 0.91m.

Breiten: 4.57m, 3.66m, 2.74m, 1.83m & 0.91m

Pile Yarn: 80% Wool (moth resistant) / 20% Nylon

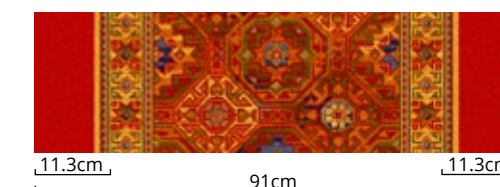
Composition du fil: 80% Laine (résistant aux mites) / 20% Nylon

Polzusammensetzung: 80% Schurwolle (mottenresistent) / 20% Nylon

Suitability: Moderate Contract including Bedrooms and Suites.

Qualité: Usage commercial modéré comprenant des chambres et des suites.

Qualität: Leichte Anwendung im Objektbereich einschließlich Schlafzimmer und Suiten.





Design: Glenavy Red Persian



1/2467 White Shirzar



11/2970 Romanza



11/2971 Fantasia



7/2984 Hampton Court



4/2353 Green Buttons & Bows



6/2421 Fezahir



2/2418 Tabriz



6/2414 Mayfayre



6/2474 Siranda



2/2648 Ethnic Panel Rust



81/2055 Kilim



17/2045 Seychelles



2/2162 Overture



2/3144 Kashmir



2/2385 Persian Garden



21/2133 Red Persian



21/2886 Vesuvius



10/2264 Firedance



11/2136 Hampton Court Runner



21/2135 Red Persian Runner



81/2138 Kilim Runner



01/2137 Ethnic Panel Rust Runner





Design: Glendun Blue Lorenzo



# GLENDUN

Axminster

Widths: 4.57m, 3.66m, 2.74m, 1.83m & 0.91m (15', 12', 9', 6' & 3')

Largeurs: 4.57m, 3.66m, 2.74m, 1.83m & 0.91m.

Breiten: 4.57m, 3.66m, 2.74m, 1.83m & 0.91m

Pile Yarn: 80% Wool (moth resistant) / 20% Nylon

Composition du fil: 80% Laine (résistant aux mites) / 20% Nylon

Polzusammensetzung: 80% Schurwolle (mottenresistent) /

20% Nylon

**Suitability:** Heavy Contract including various Public Areas, Corridors, Meeting Rooms, and Bedrooms and Suites.

**Qualité:** Usage commercial intensif y compris Zones publiques, Couloirs, Salles de réunion, et Chambres et suites.

**Qualität:** Starke Nutzung im Objektbereich einschließlich alle öffentlicher Bereiche, Korridore, Tagungsräume sowie Schlafzimmer und Suiten.



Design: Glendun Blue Caliph



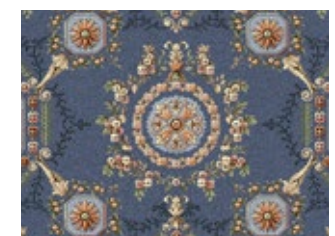
1/2431 Canterbury



11/20063 Rosemoor



5/2380 Blue Lorenzo



5/2446 Blue Caliph



3/2152 Samarkand





Design: Glenmoy Persian Garden



# GLENMOY

Axminster

Widths: 4.57m, 3.66m, 2.74m, 1.83m & 0.91m (15', 12', 9', 6' & 3')

Largeurs: 4.57m, 3.66m, 2.74m, 1.83m & 0.91m.

Breiten: 4.57m, 3.66m, 2.74m, 1.83m & 0.91m

Pile Yarn: 80% Wool (moth resistant) / 20% Nylon

Composition du fil: 80% Laine (résistant aux mites) / 20% Nylon

Polzusammensetzung: 80% Schurwolle (mottenresistent) /

20% Nylon

**Suitability:** Heavy Contract including Various Public Areas, Corridors, Meeting Rooms, Bedrooms and Suites.

**Qualité:** Usage commercial intensif y compris Zones publiques, Couloirs, Salles de réunion, et Chambres et suites.

**Qualität:** Starke Nutzung im Objektbereich einschließlich alle öffentlicher Bereiche, Korridore, Tagungsräume sowie Schlafzimmer und Suiten.



Design: Glenmoy Stornoway



6/2470 Madame Pompadour



4/2371 Green Vivaldi



2/2371 Vivaldi



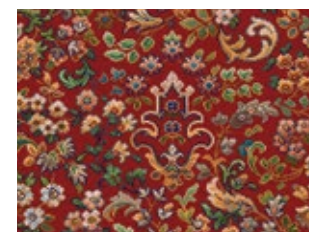
2/2157 Seville



21/2652 Antique Sunset



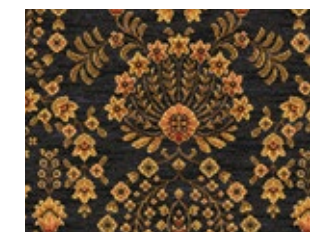
10/2160 Persian Garden



21/2650 Red Sultan



91/2650 Black Sultan



10/2754 Royal Stewart



12/2756 Blackwatch



91/20082 Robertson



91/20083 Douglas



2/2755 Beige Chisholm



92/2755 Iona



94/2755 Lerwick



91/2755 Skye



93/2755 Stornoway



"...Delicate pastel designs sit alongside vividly rich, Persian-inspired creations and traditional plaids."



Design: Habitus Strond Pier



# HABITÛS

Tufted Loop

Widths: 5m, 4m, 3m, 2m & 1m (16'4", 13'1", 9'10", 6'6" & 3'3")

Largeurs: 5m, 4m, 3m, 2m & 1m

Breiten: 5m, 4m, 3m, 2m & 1m

Pile Yarn: 100% Wool

Composition du fil: 100% Laine (résistant aux mites)

Polzusammensetzung: 100% Schurwolle (mottenresistent)

Suitability: Moderate Contract including Bedrooms and Suites.

Qualité: Usage commercial modéré comprenant des chambres et des suites.

Qualität: Leichte Anwendung im Objektbereich einschließlich Schlafzimmer und Suiten.

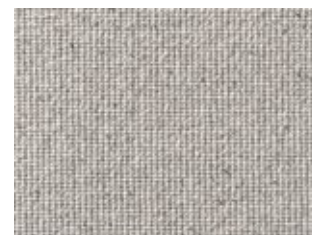


Design: HABITUS Croft Rye

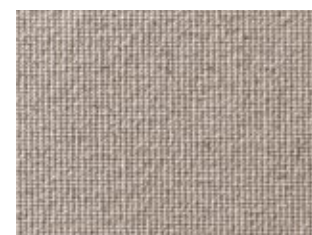


### Croft

70/1318 Surf



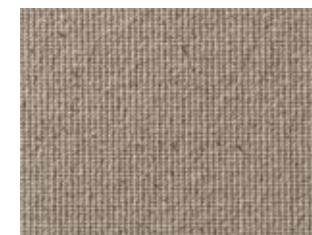
25/1318 Soya



72/1318 Wren



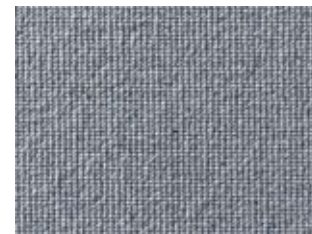
35/1318 Rye



75/1318 Etching



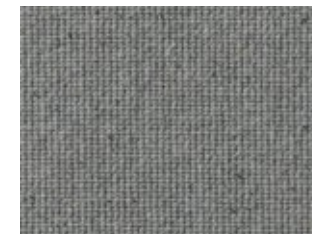
65/1318 Reef



62/1318 Mere



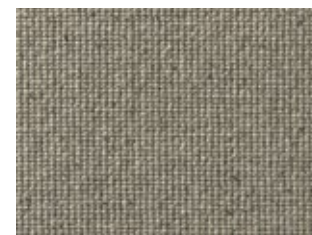
78/1318 Hearth



74/1318 Furrow



38/1318 Gable



Design: HABITUS Croft Hearth







# Strönd

20/1317 Shoal



35/1317 Shore



70/1317 Sail



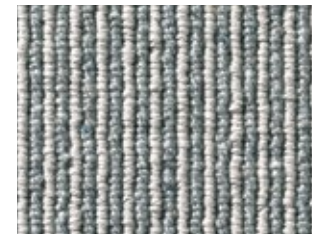
38/1317 Creek



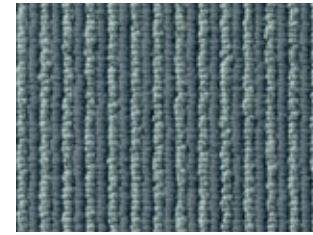
75/1317 Pier



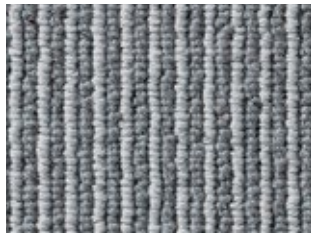
80/1317 Bay



65/1317 Ebb



78/1317 Brook



Design: HABITÜS Croft Furrow







Design: Sheriden Downton Pindot

# Sheriden

Axminster

Widths: 4.57m, 3.66m, 2.74m, 1.83m & 0.91m (15', 12', 9', 6' & 3')

Largeurs: 4.57m, 3.66m, 2.74m, 1.83m & 0.91m.

Breiten: 4.57m, 3.66m, 2.74m, 1.83m & 0.91m

Pile Yarn: 80% Wool (moth resistant) / 20% Nylon

Composition du fil: 80% Laine (résistant aux mites) / 20% Nylon

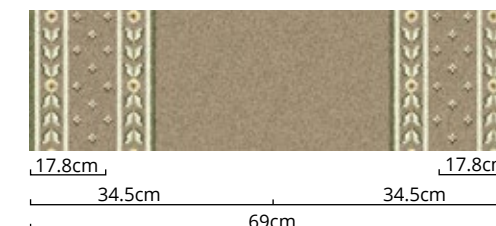
Polzusammensetzung: 80% Schurwolle (mottenresistent) / 20% Nylon

Suitability: Heavy Contract including all Public Areas, Corridors, Meeting Rooms, and Bedrooms and Suites.

Qualité: Usage commercial intensif y compris Zones publiques, Couloirs, Salles de réunion, et Chambres et suites.

Qualität: Starke Nutzung im Objektbereich einschließlich verschiedener öffentlicher Bereiche, Korridore, Tagungsräume sowie Schlafzimmer und Suiten.

## Axminster Runner / Borders

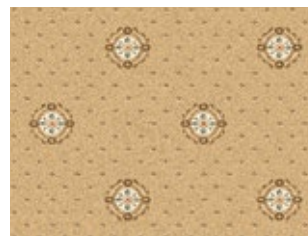




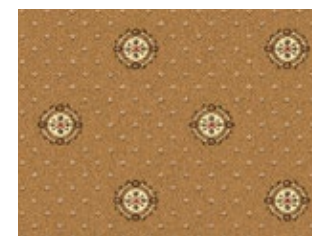
Design: Sheriden Royal Blue Cameo



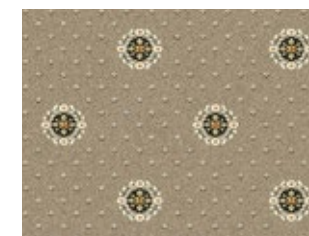
13/2558 Cameo Regency Cream



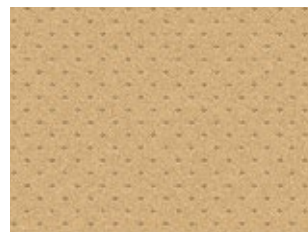
43/2617 Cameo Florence Gold



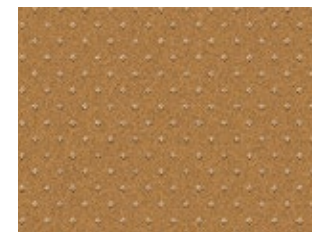
51/2558 Cameo Downton



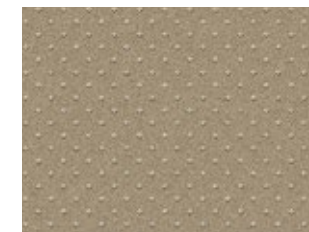
13/2562 Pindot Regency Cream



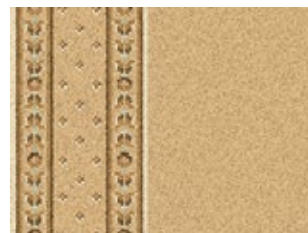
43/2562 Pindot Florence Gold



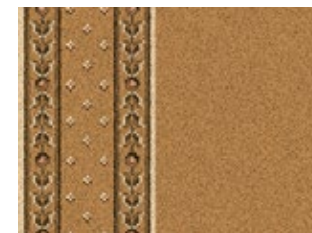
51/2562 Pindot Downton



13/2574 Runner Regency Cream



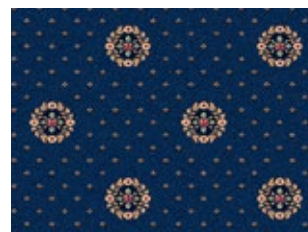
43/2622 Runner Florence Gold



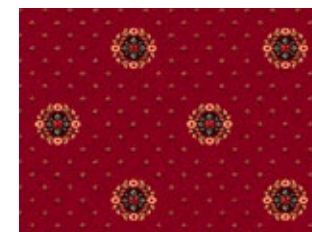
51/2574 Runner Downton



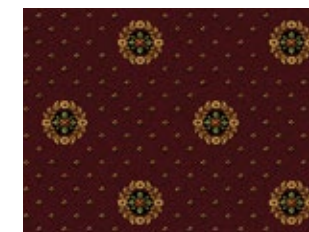
52/2461 Cameo Royal Blue



10/2461 Cameo Royal Red



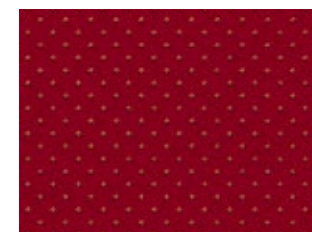
22/2614 Cameo Bordeaux



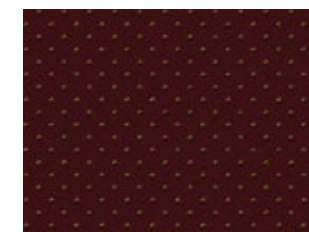
52/2462 Pindot Royal Blue



10/2462 Pindot Royal Red



22/2562 Pindot Bordeaux



52/2605 Runner Royal Blue



10/2605 Runner Royal Red



22/2576 Runner Bordeaux





Design: Tazmin Motif Prussian

# Tazmin

Axminster

Widths: 4.57m, 3.66m, 2.74m, 1.83m & 0.91m (15', 12', 9', 6' & 3')

Largeurs: 4.57m, 3.66m, 2.74m, 1.83m & 0.91m.

Breiten: 4.57m, 3.66m, 2.74m, 1.83m & 0.91m

Pile Yarn: 80% Wool (moth resistant) / 20% Nylon

Composition du fil: 80% Laine (résistant aux mites) / 20% Nylon

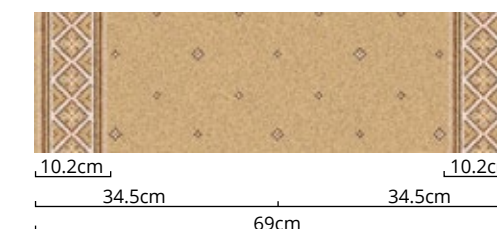
Polzusammensetzung: 80% Schurwolle (mottenresistent) / 20% Nylon

**Suitability:** Moderate Contract including Bedrooms and Suites.

**Qualité:** Usage commercial modéré comprenant des chambres et des suites.

**Qualität:** Leichte Anwendung im Objektbereich einschließlich Schlafzimmer und Suiten.

**Axminster Runner / Borders**

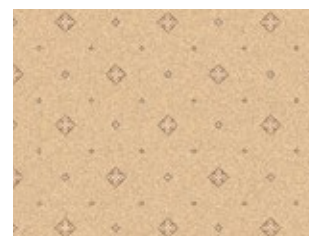




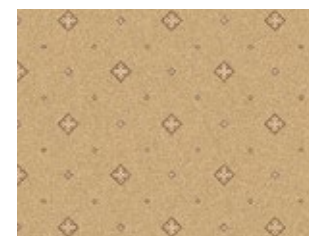
Design: Tazmin Motif Camel



11/2628 Motif Camel



53/2628 Motif Kaftan



92/2628 Motif Blue Grass



11/2724 Pindot Camel



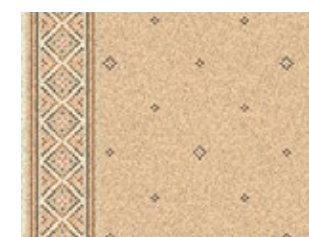
53/2724 Pindot Kaftan



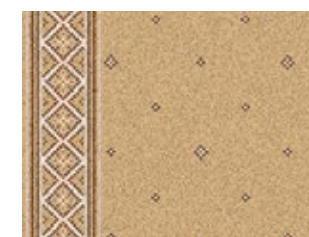
92/2724 Pindot Blue Grass



11/2634 Runner Camel



53/2716 Runner Kaftan



92/2634 Runner Blue Grass



31/2628 Motif Prussian



31/2724 Pindot Prussian



31/2634 Runner Prussian



Design: Tazmin Motif Blue Grass



Design: Tazmin Pindot Forest



Design: Tazmin Kaftan



52/2628 Motif Umber



72/2710 Motif Forest



23/2628 Motif Sienna



10/2628 Motif Red



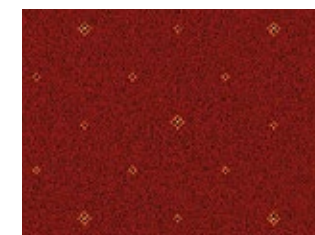
52/2724 Pindot Umber



72/2724 Pindot Forest



23/2724 Pindot Sienna



10/2724 Pindot Red



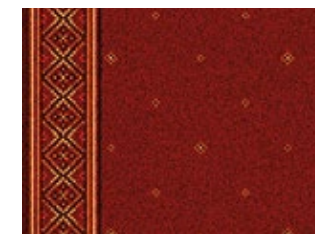
52/2634 Runner Umber



72/2718 Runner Forest



23/2634 Runner Sienna



10/2634 Runner Red





Design: York Wilton Fossil



## YORK WILTON

---

Wilton

Widths: 5m, 4m, 3m, 2m & 1m (16'4", 13'1", 9'10", 6'6" & 3'3")

Largeurs: 5m, 4m, 3m, 2m & 1m

Breiten: 5m, 4m, 3m, 2m & 1m

Pile Yarn: 80% Wool (moth resistant) / 20% Nylon

Composition du fil: 80% Laine (résistant aux mites) / 20% Nylon

Polzusammensetzung: 80% Schurwolle (mottenresistent) / 20% Nylon

**Suitability:** Heavy Contract including Various Public Areas, Corridors, Meeting Rooms, and Bedrooms and Suites.

**Qualité:** Usage commercial intensif y compris Zones publiques, Couloirs, Salles de réunion, et Chambres et suites.

**Qualität:** Starke Nutzung im Objektbereich einschließlich alle öffentlicher Bereiche, Korridore, Tagungsräume sowie Schlafzimmer und Suiten.



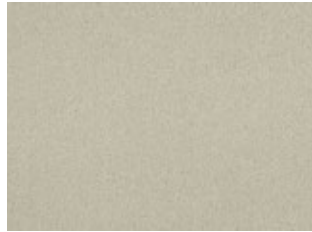
Y1066 Porcelain NEW



Y1065 Alabaster NEW



Y1072 Limestone NEW



Y1068 Ecrú NEW



Y1071 Catkin NEW



Y1070 Stoneware NEW



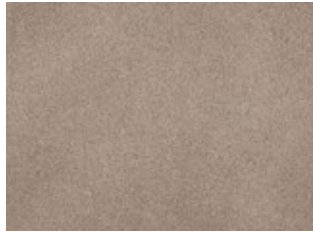
Y1067 Tapestry NEW



Y1069 Hessian NEW



Y1073 Oyster NEW



Y1074 Fossil NEW



Y1075 Quarry NEW



Design: York Wilton Safari



Design: York Wilton Gainsborough



Y1021 Flax



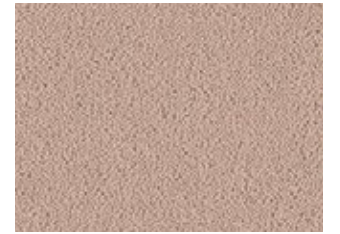
Y1056 Cotswold



Y1047 Parchment



Y1008 Doeskin



Y1035 Sailcloth



Y1009 Rice



Y1007 Wholemeal



Y1032 Flint



Y1013 Irish Cream



Y1012 Corn



Y1029 Walnut



Y1044 Hazelnut



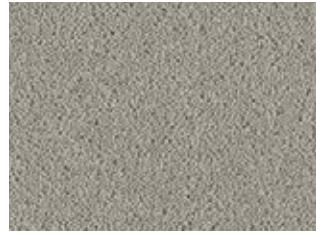
Design: York Wilton Orkney



Y1053 Pavilion



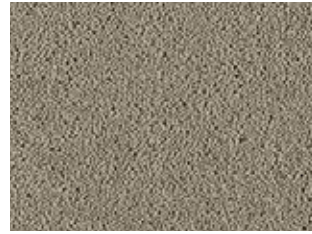
Y1063 Goose



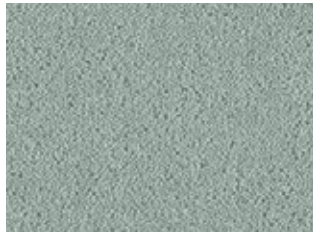
Y1064 Mockingbird



Y1055 Squirrel



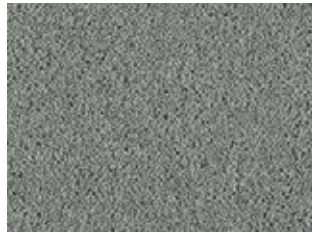
Y1059 Shetland



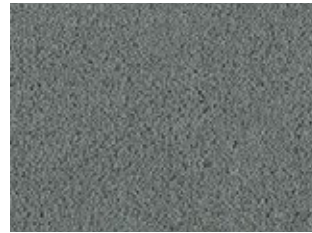
Y1062 Orkney



Y1051 Heron



Y1050 Pewter



Y1057 Flannel



Y1052 Cuckoo



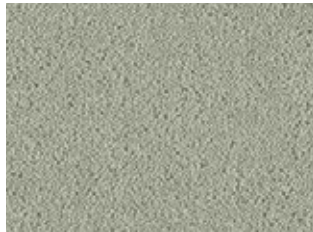
Y1030 Hemp



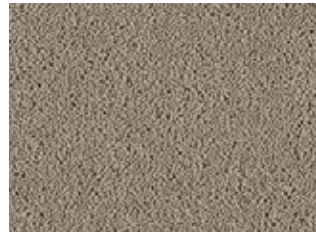
Y1046 Peppercorn



Y1058 Nougat



Y1054 Gainsborough



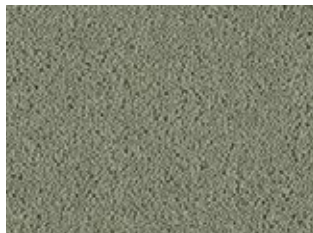
Y1045 Granola



Y1023 Mineral



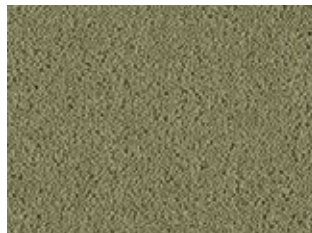
Y1001 Meadow



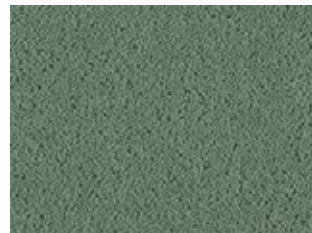
Y1049 Spruce



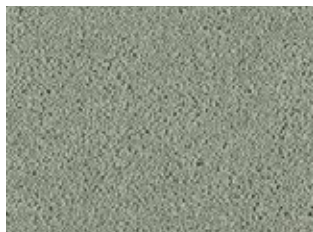
Y1004 Kale



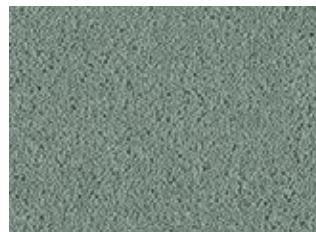
Y1002 Sage



Y1040 Sorrel



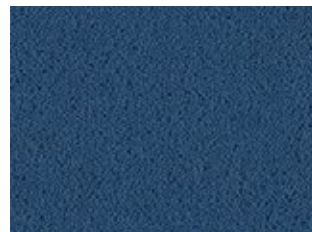
Y1060 Chambray



Y1061 Indigo



Y1018 America Blue



Design: York Wilton Meadow

Y1048 Sahara



"A diverse palette of Woven Wilton carpets that will complement any interior."

Y1038 Linseed



Y1011 Gorse



Y1026 Harvest Gold



Y1015 Iron Ore



Y1037 Safari



Y1010 Old Gold



Y1043 Brandysnap



Y1027 Brick



Y1019 Red Earth



Y1042 Matador



Y1014 Redcurrant



Y1041 Shiraz







BY APPOINTMENT TO  
HER MAJESTY THE QUEEN  
CARPET MANUFACTURER  
ULSTER CARPETS (HOLDINGS) LTD  
COUNTY ARMAGH

# ulster™



Ulster Carpets Ltd  
Castleisland Factory  
Craigavon  
N. Ireland, BT62 1EE  
Tel: +44 (0) 28 3833 4433

North America: [ucamerica@ulstercarpets.com](mailto:ucamerica@ulstercarpets.com)  
Great Britain: [uclondon@ulstercarpets.com](mailto:uclondon@ulstercarpets.com)  
Europe: [uceurope@ulstercarpets.com](mailto:uceurope@ulstercarpets.com)  
Ireland: [ucireland@ulstercarpets.com](mailto:ucireland@ulstercarpets.com)  
Dubai: [ucdubai@ulstercarpets.com](mailto:ucdubai@ulstercarpets.com)

