



ulster™

www.ulstercarpets.com

watercolours

amulet

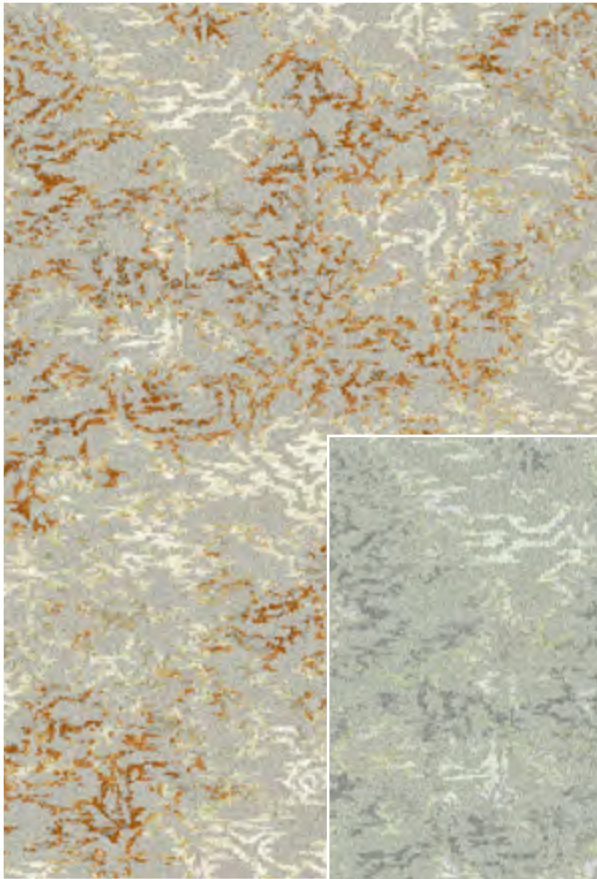
“These effortless textures are layered over classic designs to give an antiqued effect - that of a textile treasured over time so only fragments of the pattern remain.”



13/20103 Amulet Celeste



92/20093 Atmosphere

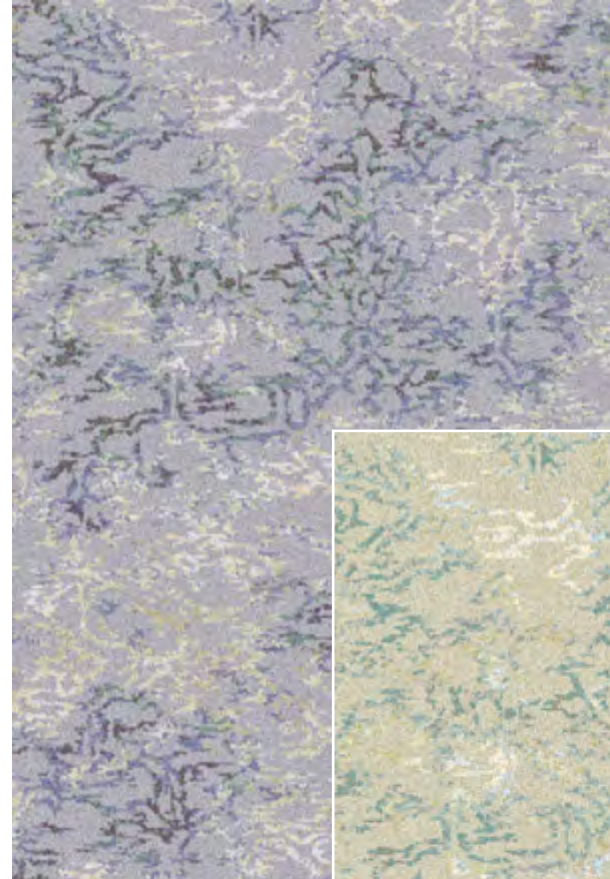


12/20091 Brimstone

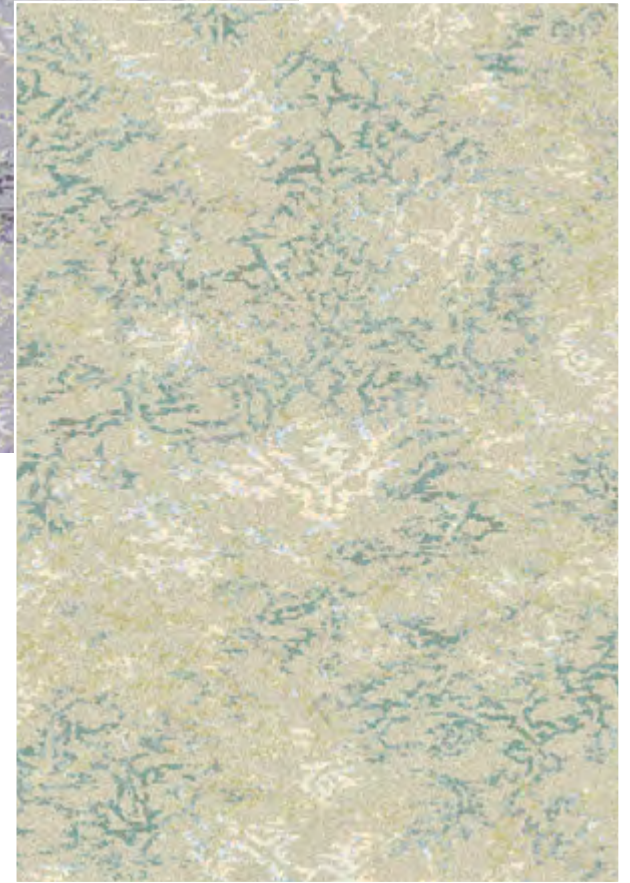


11/20090 Ombre

80% wool 20% nylon - suitable for heavy wear



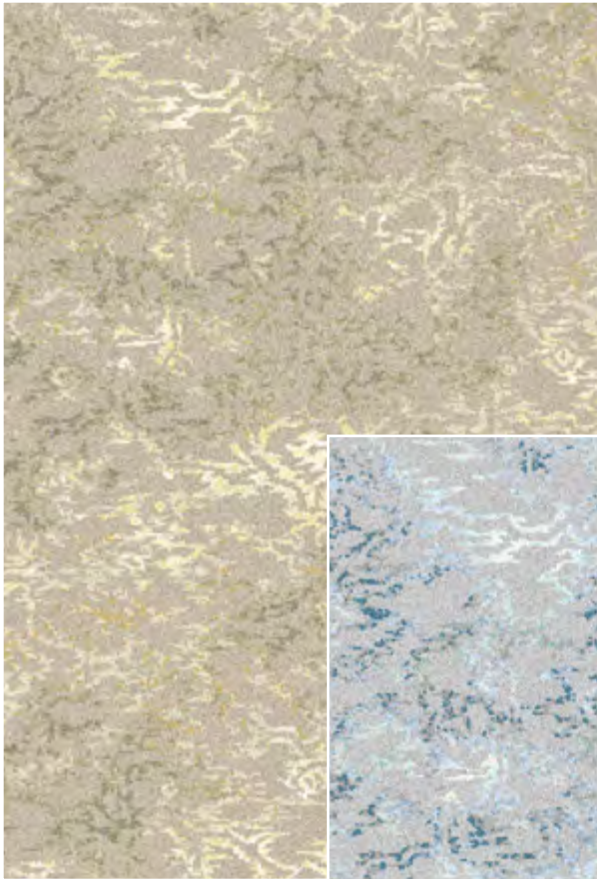
93/20094 Alchemy



91/20092 Seaglass

Widths available: 4.57m, 3.66m, 2.74m, 1.83m & 0.91m





15/20103 Savannah



31/20103 Ocean

80% wool 20% nylon - suitable for heavy wear



13/20103 Celeste

mineral

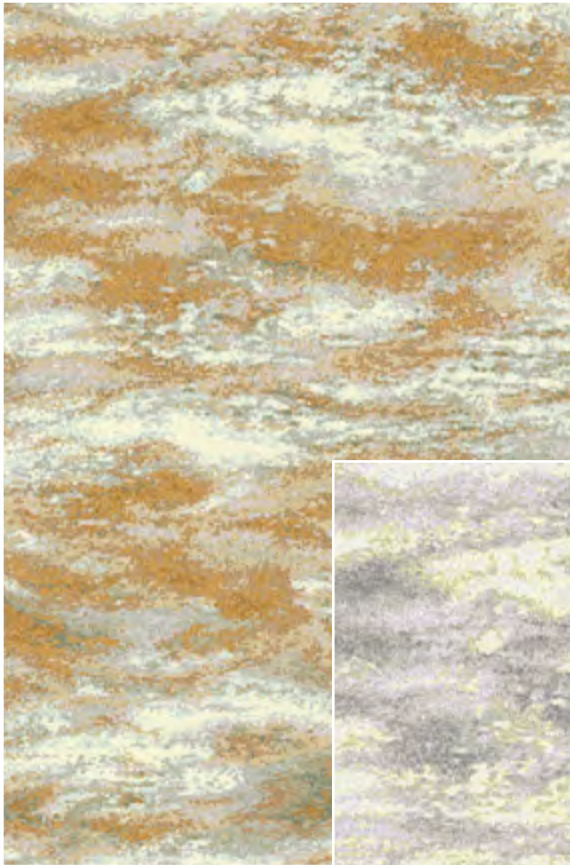
"Deliberate yet whimsical brush strokes evoke feelings of sky and water as they run and blend into the surface of the canvas."



15/20089 Mineral Savanna



92/20089 Atmosphere

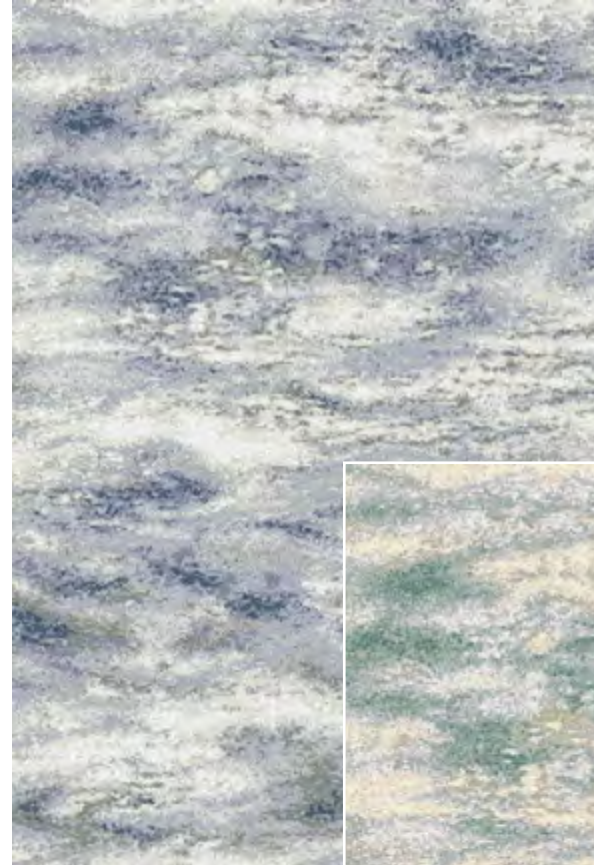


12/20089 Brimstone



11/20089 Ombre

80% wool 20% nylon - suitable for heavy wear

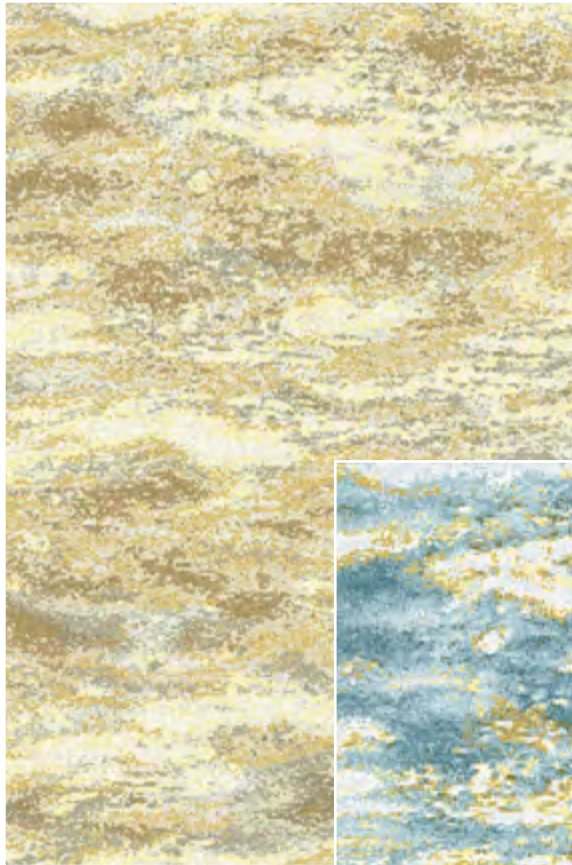


93/20089 Alchemy

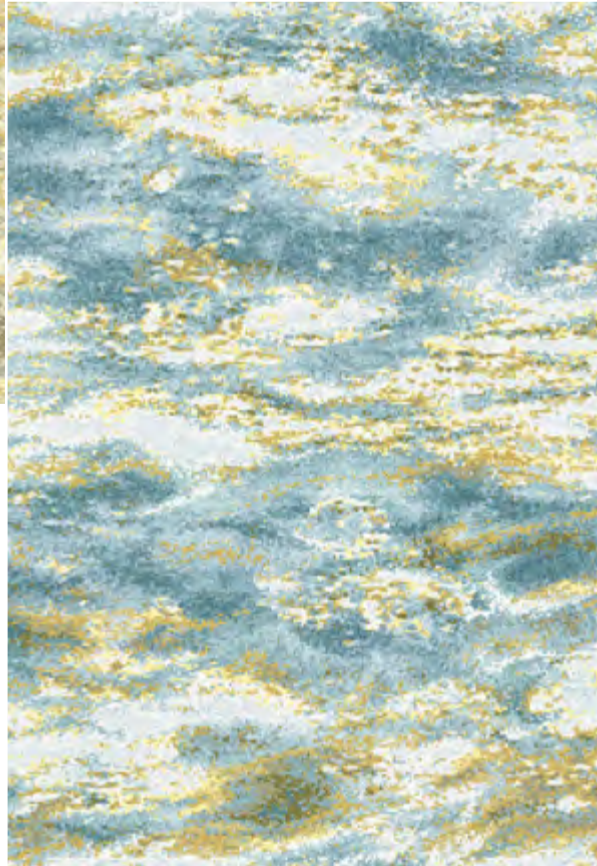


91/20089 Seaglass

Widths available: 4.57m, 3.66m, 2.74m, 1.83m & 0.91m

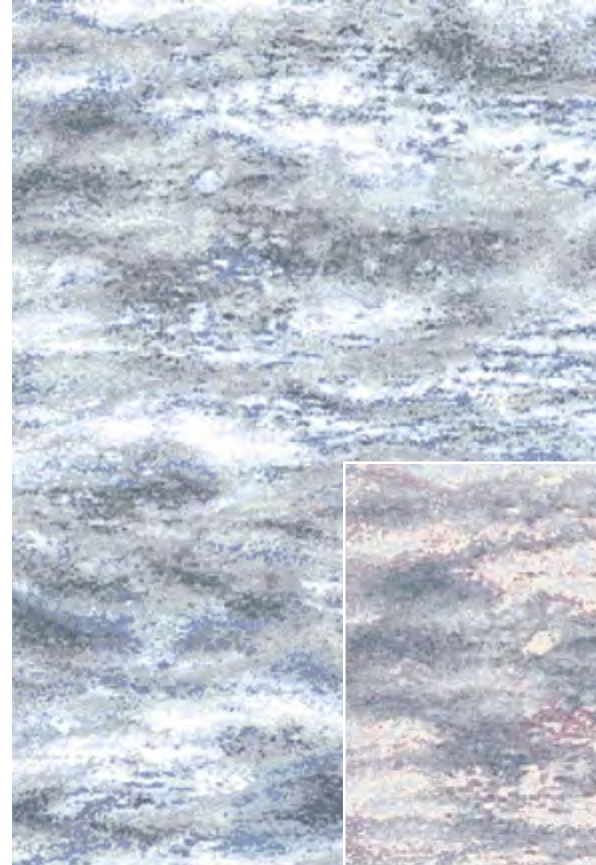


15/20089 Savannah



32/20089 Azores

80% wool 20% nylon - suitable for heavy wear



14/20089 Zenith



13/20089 Celeste

Widths available: 4.57m, 3.66m, 2.74m, 1.83m & 0.91m

key selling points



Wool

Natural & durable
Fire safe
Easy to clean
Non allergenic



Product

Optimum performance
Greater stability
Contract rated
Unrivalled choice



Quality

Superior construction
Moth resistant
Premium materials
Innovative design



Design

Distinctive pattern
Contemporary choice
Sophisticated colours
Deluxe finish



Colours may not match due to printing limitations.
Products should be selected from actual samples.



13/20103 Amulet Celeste



14/20089 Mineral Zenith



ulsterTM
www.ulstercarpets.com

Ulster Carpets Ltd
Castleisland Factory, Portadown, Co Armagh, BT62 1EE

T: 028 3833 4433 | www.ulstercarpets.com