



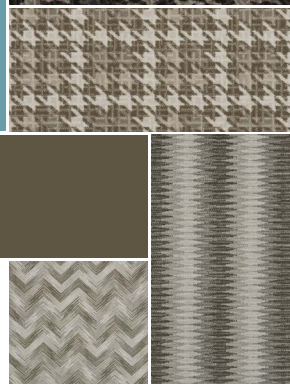
ulster™  
[www.ulstercarpets.com](http://www.ulstercarpets.com)

# FUSION

Available in 4m widths

80% wool / 20% nylon

Heavy Contract /  
Extra Heavy Domestic Wear



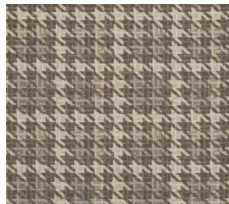
# Tone

Available in 4m Widths

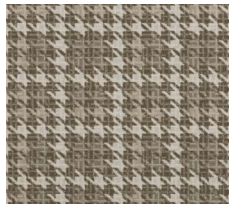
80% Wool / 20% Nylon

Suitable for Heavy Contract /

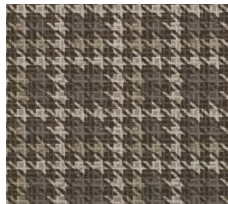
Extra Domestic Wear



11/20086 Tone Marquee



91/20086 Tone Alloy



92/20086 Tone Tungsten



31/20086 Tone Electric



32/20086 Tone Denim



Tone Tungsten (92/20086)

# Sonic

Available in 4m Widths

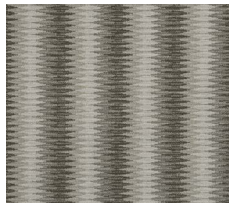
80% Wool / 20% Nylon

Suitable for Heavy Contract /

Extra Domestic Wear



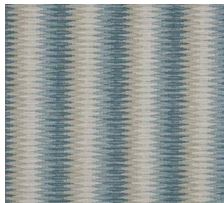
11/20087 Sonic Marquee



91/20087 Sonic Alloy



92/20087 Sonic Tungsten



31/20087 Sonic Electric



32/20087 Sonic Denim



Sonic Denim (32/20087)



# Reverb

Available in 4m Widths

80% Wool / 20% Nylon

Suitable for Heavy Contract /

Extra Domestic Wear



11/20088 Reverb Marquee



91/20088 Reverb Alloy



92/20088 Reverb Tungsten



31/20088 Reverb Electric



32/20088 Reverb Denim



Reverb Denim (32/20088)

# FUSION



Available in 4m Widths

80% Wool (moth resistant) / 20% Nylon

Heavy Contract / Extra Heavy Domestic Wear

Repeat Length:

Tone 44cm (17") Self Match

Sonic 76cm (30") Self Match

Reverb 102cm (40") Self Match

Total Pile Weight: 1207g/m<sup>2</sup> (36.50oz/yd<sup>2</sup>)

Total Pile Height: 7.14mm (0.28")

Pitch: 27.56 per dm (7 per inch)

Rows: 31.50 per dm (8 per inch)

**ulster**<sup>™</sup>  
www.ulstercarpets.com