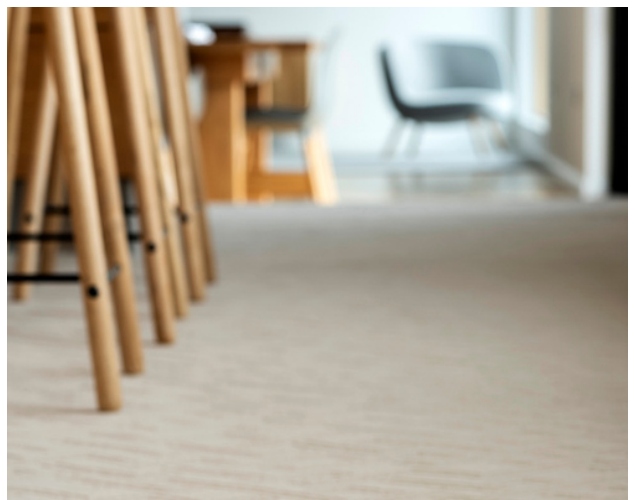
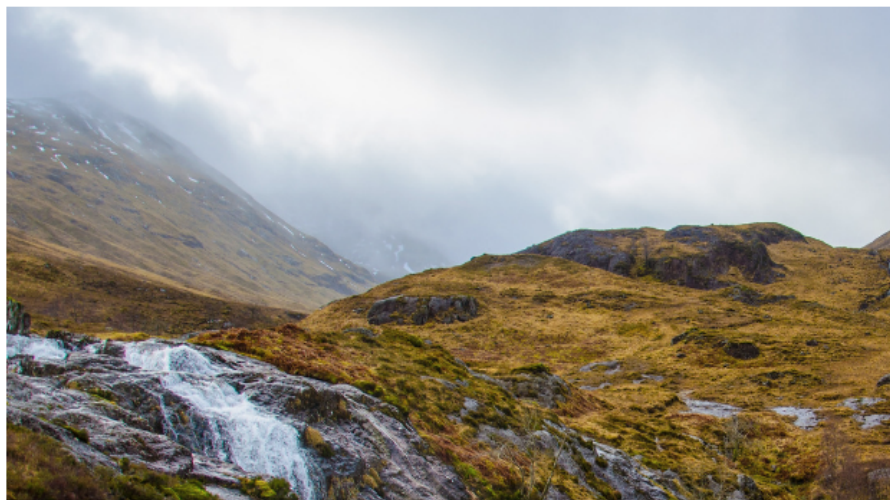


t e r r æ n



ulster™  
[www.ulstercarpets.com](http://www.ulstercarpets.com)

## INSPIRATION

The designs in terræn are a reflection of familiar surfaces found in both Urban and Rural settings, from concrete castings to forest floors - the range is all about creating pattern with texture.

The three 'urban' textures; 'Lenke', 'Berg' and 'Ryg' explore designs from sources as varied as angled shadows and light from urban architecture, sculpted concrete surfaces, and the more familiar hounds-tooth design from furnishing and fashion.



'Fronde', 'Oska' and 'Nömad' are organic designs, which reflect dappled shades through branches of trees, sprays of grass or slender branches of new buds in a gentle breeze, and again a design familiar in furnishing and fashion - a flowing paisley motif reminiscent of henna painting.

All the designs have a resonance with the places that we live in and our surrounding environment without being overtly patterned, making them perfect for modern, calm interiors and as a foil to statement pieces.

The colour palette is restrained and neutral, offering a range of four depths of tone;

| Krem |  
neutral light tone resembling cream

| Grå |  
soft grey inspired by light cloud

| Kaffe |  
a classic natural warm stone

| Granit |  
rich velvety shadowed shade

t e r r  n

[ter-rain]

*noun*

a stretch of land, especially with regard to its physical features.  
"they were delayed by rough terrain"

*synonyms:*

land, ground, territory;







Design: Berg

Construction: Level Cut Loop

Pile Content: 80% Wool 20% Nylon

Widths Available: 4m, 3m, 2m & 1m

Repeat Length: 99cm x 63cm

Repeat Type: Self Match

Suitability: General Wear



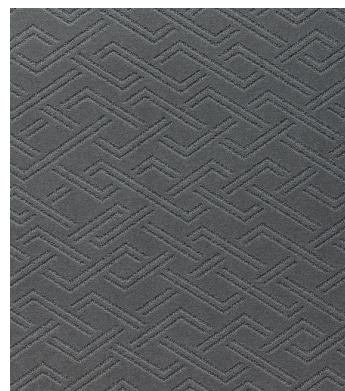
Krem | 20/2603



Kaffe | 30/2603



Grå | 70/2603



Granit | 76/2603

## DESIGN | FROND



Granit | 76/2604

Design: Frond

Construction: Level Cut Loop

Pile Content: 80% Wool 20% Nylon

Widths Available: 4m, 3m, 2m & 1m

Repeat Length: 99cm x 56cm

Repeat Type: Self Match

Suitability: General Wear



Krem | 20/2604



Grå | 70/2604



## DESIGN | LENKE



Design: Lenke

Construction: Level Cut Loop

Pile Content: 80% Wool 20% Nylon

Widths Available: 4m, 3m, 2m & 1m

Repeat Length: 6.7cm x 5cm

Repeat Type: Self Match

Suitability: General Wear



Krem | 20/2601



Kaffe | 30/2601



Grå | 70/2601



Granit | 76/2601



Design: Nömad

Construction: Level Cut Loop

Pile Content: 80% Wool 20% Nylon

Widths Available: 4m, 3m, 2m & 1m

Repeat Length: 99cm x 77.5cm

Repeat Type: Self Match

Suitability: General Wear



Krem | 20/2607



Grå | 70/2607



Granit | 76/2607



## DESIGN | OSKA



Design: Oska

Construction: Level Cut Loop

Pile Content: 80% Wool 20% Nylon

Widths Available: 4m, 3m, 2m & 1m

Repeat Length: 99cm x 85cm

Repeat Type: Self Match

Suitability: General Wear



Krem | 20/2602



Kaffe | 30/2602



Grå | 70/2602



Granit | 76/2602



Design: Ryg

Construction: Level Cut Loop

Pile Content: 80% Wool 20% Nylon

Widths Available: 4m, 3m, 2m & 1m

Repeat Length: 99cm x 54cm

Repeat Type: Self Match

Suitability: General Wear



Krem | 20/2606



Grå | 70/2606



Granit | 76/2606





t e r r  n

Luxurious finish

80% Wool, 20% Nylon  
general wear suitability

Tufted with a light weight backing  
easy to fit and handle

1.50 tog rating  
Suitable for under floor heating

On trend designs and colours  
perfect for any interior

Moth resistant

4 colour matching widths - 4m, 3m, 2m & 1m  
Better value, less waste and fewer seams

«MULTIWIDTHS»

ulster™  
[www.ulstercarpets.com](http://www.ulstercarpets.com)

Ulster Carpets Ltd (Head Office)  
Castleisland Factory | Craigavon | Co. Armagh | BT62 1EE  
T: 028 3833 4433 | E: [marketing@ulstercarpets.com](mailto:marketing@ulstercarpets.com)